



LEHIGH AND NORTHAMPTON TRANSPORTATION AUTHORITY

DRAFT OPERATING BUDGET BY DIVISION

FISCAL YEAR 2027



REVENUE, SUBSIDY AND
EXPENDITURE DETAIL
FISCAL YEAR 2027



Revenue Assumptions

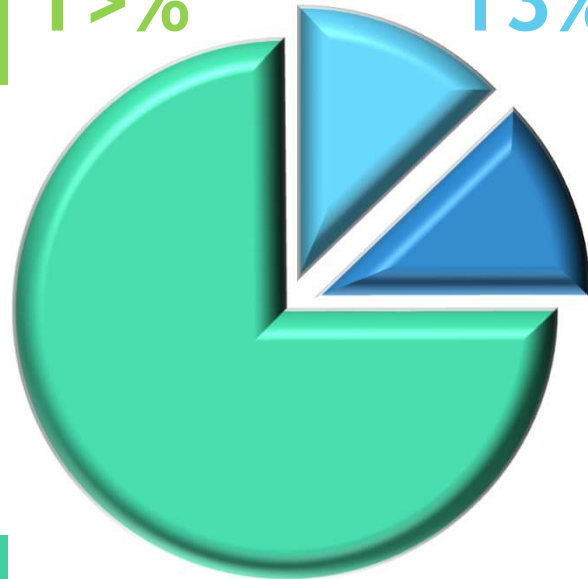
- ▶ Annual Revenue Passenger Trips of 3,154,440
- ▶ Auxiliary revenue projections based on contractual guarantee
- ▶ Cash fare increase as of 3/23/2026
- ▶ Special Transit Fares assume FY2026 levels with small increase for Musikfest

FY2027 PROJECTED REVENUES

Non-Transportation Revenue - \$5,000

- Interest income applicable to LANTA's general checking account
- Other non-transportation revenue is projected on historical trends for fare card replacements, vending commissions, and proceeds for metal recycling

1 > %



Auxiliary Trans Revenue - \$529,500

- FY2027 projection represents the annual guarantee to LANTA for advertising services on revenue vehicles and bus shelters
- Includes over excess payment of \$150,000 from previous fiscal year

13%

Passenger Fares - \$3.09M

- FY2027 Ridership projection of 3,154,440 trips
- March 23, 2026 increase to fares

75%

13%

Special Transit Fares - \$502,840

- Revenues generated by various route service agreements
- Current RSAs: ASD, Amazon, FedEx and various local colleges.





Operating Expenditure Assumptions

- ▶ Union wage projections are based on 4.75% increases as required by the CBA
- ▶ Non-union salary projections are based on 3% merit increases allocated by each employee's date of hire
- ▶ Healthcare costs are budgeted at "worst-case" scenario, less employee contributions and guaranteed healthcare rebates
- ▶ Purchased Transportation will remain at the FY2026 billable rates
- ▶ Expenditures incurred applicable to all divisions are allocated by call volume percentages. Percentages used for FY2027 are 35.2% LB, 66.7% LV, and 5.4% CT
- ▶ Interest expense estimated to remain at the same level due to anticipated need of Line of Credit transfers to support cash flow due to any delays in funding

FY2027 PROJECTED EXPENDITURES

1. **LABOR - \$21,002,749**
Non-Union and Union salaries & wages. Exclusive of PTO.

2. **FRINGE BENEFITS - \$14,981,081**
Budgeted at worst case scenario. Inclusive of PTO.

3. **SERVICES - \$3,500,485**
Represents third party contractual services.

4. **FUEL - \$1,492,825**
Includes both CNG and diesel fuel projections and costs to operate CNG station.

5. **TIRES & TUBES - \$198,000**
Bridgestone contracted amount.

6. **MATERIALS & SUPPLIES - \$2,826,706**
Includes bus parts, office supplies and ticket stock.

Total Operating Expenses

\$49,866,452

7. **UTILITIES - \$915,462**
Utility costs for Allentown & Easton Facilities and all transit centers.

8. **CASUALTY & LIABILITY COSTS - \$1,321,689**
Property and liability insurance for all locations.

9. **TAXES - \$25,070**
Fuel surcharges on diesel fuel deliveries.

10. **P/T - \$3,090,199**
Projected total of operating expenses for ADA program.

11. **MISCELLANEOUS EXPENSE - \$360,750**
Includes travel, training and any dues and subscriptions.

12. **INTEREST EXPENSE - \$65,000**
Line of credit interest.

13. **LEASES & RENTALS - \$86,437**
Portion of the 60 W Broad St lease allocated to LB.



FY2027 PROJECTED SUBSIDY

STATE SUBSIDY \$30,991,824

FEDERAL OPERATING ASSISTANCE \$3,000,000

FEDERAL SUBSIDY VOH \$572,000

- For CNG buses, in order to maintain a state of good repair, an ongoing vehicle overhaul program began in FY2023 and will continue until all model years reach their mid-life point of 6 years

FEDERAL SUBSIDY ADA/PM/TL/SS \$9,638,618

- FY2027 formula funding will be used to support LANTA's operating activities

LOCAL SUBSIDY \$1,485,319

- Lehigh and Northampton counties operating assistance
- FY2027 funding represents a 5% increase over FY2026



LANTA - LANtaBUS DIVISION
 OPERATING BUDGET
 FISCAL YEAR ENDED JUNE 30, 2027

REVENUES

	Projected 2027 Budget
PASSENGER FARES	3,096,351
SPECIAL TRANSIT FARES	502,840
AUXILIARY TRANSPORTATION REVENUE	529,500
NON TRANSPORTATION REVENUE	5,000
	<hr/>
TOTAL REVENUES	4,133,691

EXPENSES

LABOR	21,002,749
FRINGE BENEFITS	14,981,081
SERVICES	3,500,485
FUEL	1,492,825
TIRES & TUBES	198,000
MATERIALS & SUPPLIES	2,826,706
UTILITIES	915,462
CASUALTY & LIABILITY COSTS	1,321,689
TAXES	25,070
PURCHASED TRANSPORTATION	3,090,199
MISCELLANEOUS EXPENSES	360,750
INTEREST EXPENSES	65,000
LEASES & RENTALS	86,437
	<hr/>
TOTAL OPERATING EXPENSES	49,866,452

NET OPERATING DEFICIT (45,732,761)

SUBSIDY

LOCAL SUBSIDY	1,485,319
STATE SUBSIDY - CY	30,991,824
STATE SUBSIDY - PY	
FEDERAL SUBSIDY - OPERATING ASST	3,000,000
FEDERAL SUBSIDY - ADA	1,034,183
FEDERAL SUBSIDY - Safety & Security	575,359
FEDERAL SUBSIDY - VOH	572,000
FEDERAL SUBSIDY - Preventative Maintenance	7,915,676
FEDERAL SUBSIDY - Tire Lease	158,400
	<hr/>

TOTAL SUBSIDY 45,732,761

NET OPERATING DEFICIT 0

Note: Totals and percentage may not be precise due to independent rounding.





REVENUE, SUBSIDY AND
EXPENDITURE DETAIL
FISCAL YEAR 2027

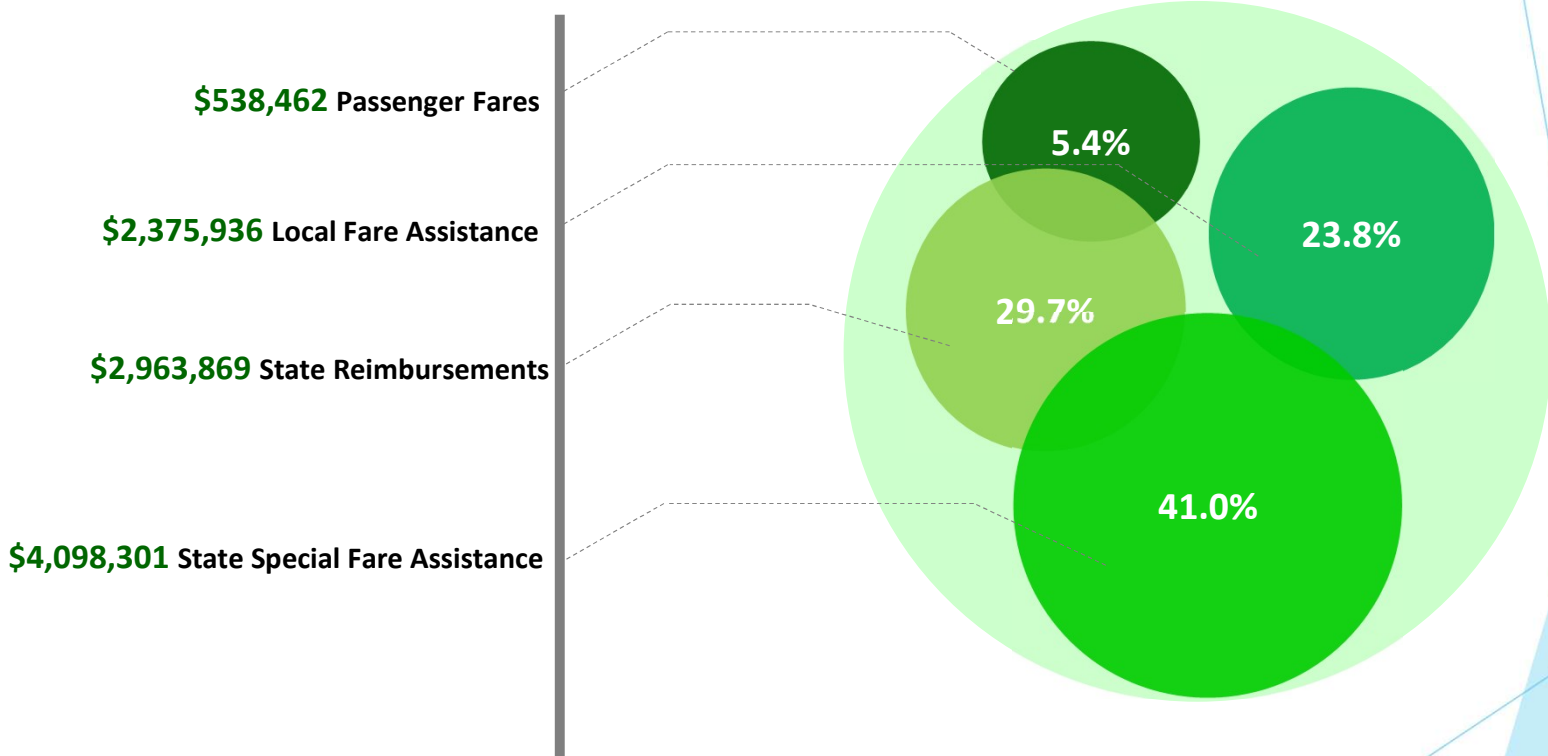


Revenue Assumptions



- ▶ Revenue Ridership assumptions are based on FY2026 anticipated actuals with varying +/- % increase per revenue funding source
- ▶ Revenue Ridership of 226,399 trips
- ▶ Full reimbursement of 85% from PennDot for the Lottery and PWD programs

FY2027 PROJECTED REVENUES

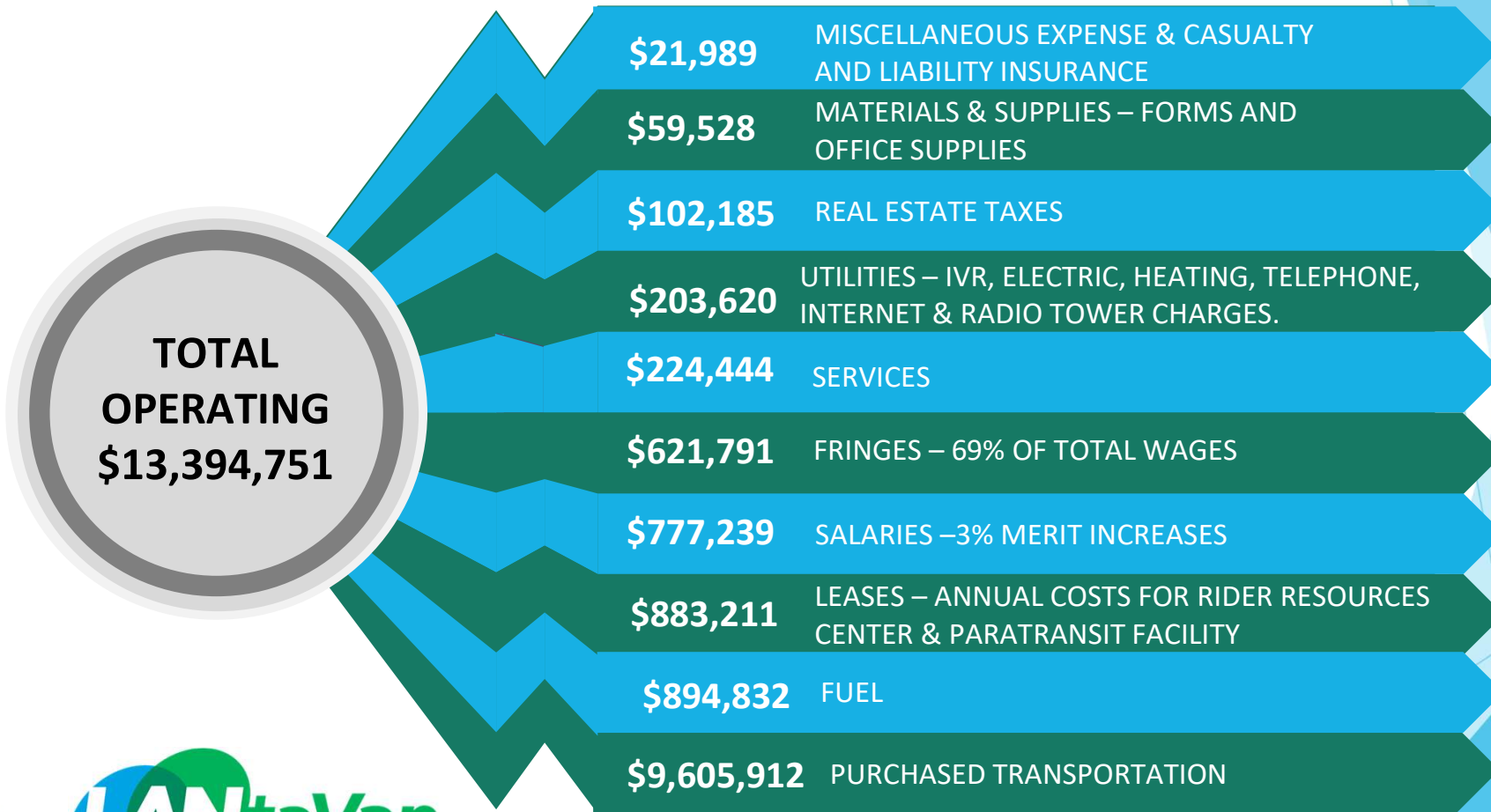




Operating Expenditure Assumptions

- ▶ Revenue projections are based on varying % increases or decreases by Funding Source
- ▶ MATP costs based on projection submitted to DHS, assuming 3% increase on most categories
- ▶ Non-union salary projections are based on 3% merit increases allocated by each employee's date of hire
- ▶ Salary allocation to LANtaVan is based on the anticipated direct time spent performing tasks related to the LANtaVan Division
- ▶ Fringe benefit allocation is representative of benefits less PTO allocations

FY2027 PROJECTED EXPENDITURES





**LANTA - LANTA Van Division
OPERATING BUDGET
FISCAL YEAR ENDED JUNE 30, 2027**

	Projected 2027 Budget
Revenue	
Passenger Fares	538,462
Area Agency on Aging	116,713
ADA	2,215,301
ADA - CER	43,922
Shared Ride Reimbursement	2,916,930
PWD Reimbursement	46,939
Lehigh County MATP	2,262,239
Northampton County MATP	1,836,063
Total Revenue	<u>9,976,568</u>
Expenses	
Labor	777,239
Fringe Benefits	621,791
Total Labor and Fringe Benefits	<u>1,399,030</u>
Services	224,444
Fuel	894,832
Materials & Supplies	59,528
Utilities	203,620
Casualty & Liability	13,390
Taxes	102,185
Purchase of Transportation Service	9,605,912
Leases	883,211
Miscellaneous	8,599
Total Expenses	<u>13,394,751</u>
Gross Surplus (Deficit)	<u>(3,418,183)</u>
Subsidy	
Local Subsidy	-
State Subsidy	3,000,000
Federal Subsidy	-
Total Subsidy	<u>3,000,000</u>
Surplus (Deficit)	<u>(418,183)</u>

NOTE: The budget does not include the assumption of a fare increase, but we anticipate pursuing a Shared Ride fare increase during the fiscal year.

Note: Totals and percentage may not be precise due to independent rounding.





REVENUE, SUBSIDY AND
EXPENDITURE DETAIL
FISCAL YEAR 2027





Revenue Assumptions

- ▶ Revenue Ridership assumptions are based on FY2026 anticipated actuals with a 2% increase per revenue funding source
- ▶ Full reimbursement of 85% from PennDot for the Lottery and PWD programs
- ▶ Fall Foliage remains static from FY2026

FY2027 PROJECTED REVENUES

TOTAL REVENUES \$ 1,534,933

Includes paratransit fares for ADA, General Public Billing, PWD & Shared Ride as well as LYNX fares.

PASSENGER FARES
\$81,182

LOCAL SPECIAL FARE ASSISTANCE
\$163,295

ADA and Carbon County Area Agency on Aging sponsored 65+ trips.

Shared Ride program for 65+ trips and PWD program for those clients under 65 with a disability.

STATE REIMBURSEMENTS
\$242,966

STATE SPECIAL FARE ASSISTANCE
\$1,045,289

MATP revenue based on total cost reimbursement.



Operating Expenditure Assumptions

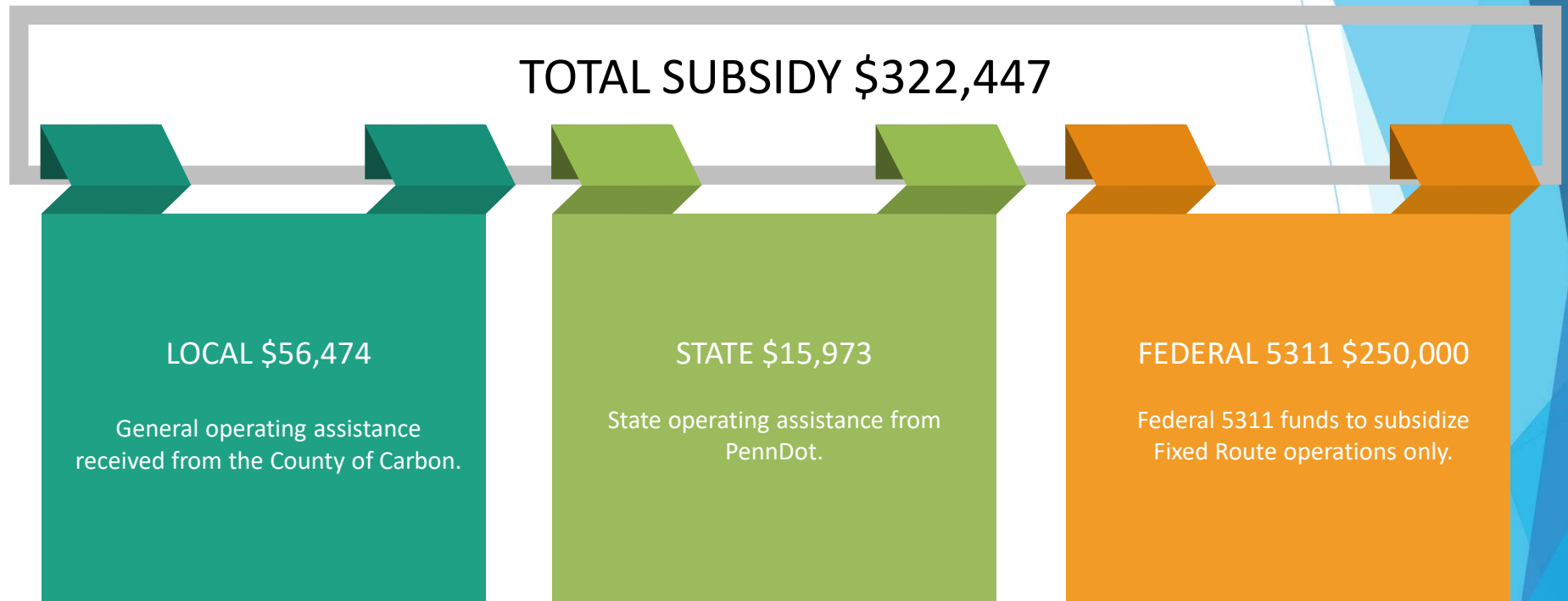


- ▶ MATP costs based on projection submitted to DHS, assuming 3% increase on most categories
- ▶ Salaries are based on merit increases of 3% percent
- ▶ Salary allocation to Carbon Transit is based on the anticipated direct time spent performing tasks related to the Carbon Transit Division
- ▶ Fringe benefit allocation is representative of benefits less PTO allocations

FY2027 PROJECTED EXPENDITURES



FY 2027 PROJECTED SUBSIDY





LANTA - CT
 CARBON TRANSIT DIVISION
 FISCAL YEAR ENDED JUNE 30, 2027

<u>REVENUES</u>	<u>Projected 2027 Budget</u>
PASSENGER FARES - FLEX	329
PASSENGER FARES - LYNX	4,448
SHUTTLE SERVICE AGREEMENTS	25,750
PASSENGER FARES - SHARED RIDE	50,655
ADA	151,419
AREA AGENCY ON AGING	11,876
SHARED RIDE REIMBURSEMENT	212,307
PWD REIMBURSEMENT	30,659
CARBON COUNTY MATP	1,045,289
INTEREST INCOME	2,200
	<hr/>
TOTAL REVENUES	<u>1,534,933</u>
<u>EXPENSES</u>	
SALARIES	259,583
FRINGE BENEFITS	207,667
Total Labor & Fringe Benefits	<hr/>
	<u>467,250</u>
SERVICES	24,304
MATERIALS & SUPPLIES	8,957
UTILITIES	23,921
FUEL	129,179
CASUALTY AND LIABILITY COSTS	-
INTEREST	-
PURCHASED TRANSPORTATION	1,796,133
LEASES	48,063
MISCELLANEOUS	334
	<hr/>
TOTAL OPERATING EXPENSES	<u>2,498,140</u>
EXCESS OF REVENUES OVER EXPENSES	<hr/>
	<u>(963,208)</u>
<u>SUBSIDY.</u>	
LOCAL SUBSIDY	56,474
STATE SUBSIDY	15,973
FEDERAL 5311 SUBSIDY	250,000
TOTAL SUBSIDY	<hr/>
	<u>322,447</u>
SURPLUS (DEFICIT)	<hr/>
	<u>(640,761)</u>

NOTE: The budget does not include the assumption of a fare increase, but we anticipate pursuing a Shared Ride fare increase during the fiscal year.



The logo features the word "LANITA" in a bold, sans-serif font. The letters "LANI" are white and are set against a blue circular background. The letters "TA" are green and are set against a green circular background. The two circles overlap. The background of the entire image is white, with abstract blue and green geometric shapes on the right side.

LANITA