



Enhanced Bus Service (EBS)

Neighborhood Transit Station
Progress Updates

December 3, 2024

EBS Progress to Date

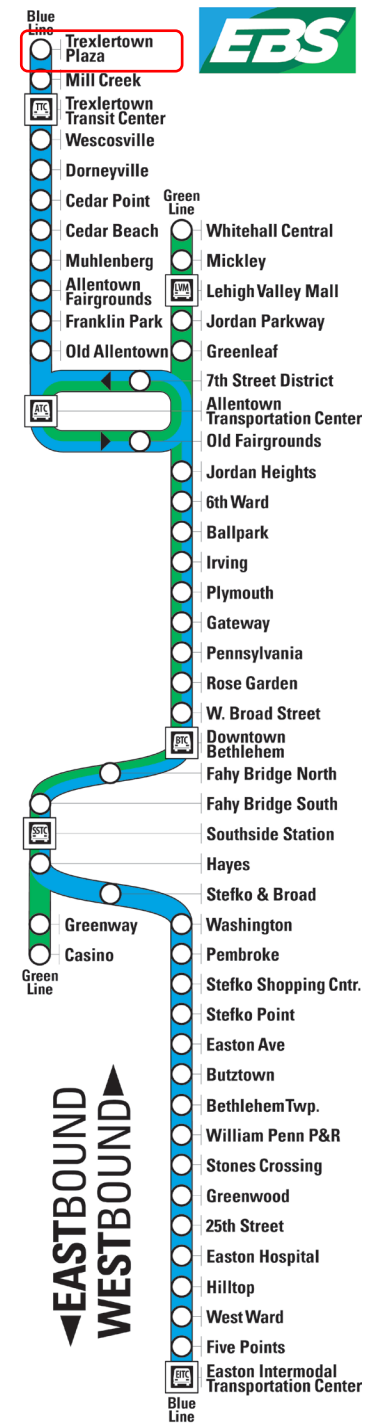
Station Name: **Trexlerstown Plaza**

EBS Line: **Blue**

Municipality: **Upper Macungie Twp**

ROW: **Private**

- 2015 Hamilton Boulevard Corridor Study
- 2022 Vision Zero Action Plan
- Site Access approved on Trexlerstown Plaza property
- Concrete Pad complete
- Shetler will be installed near-term



EBS Progress to Date

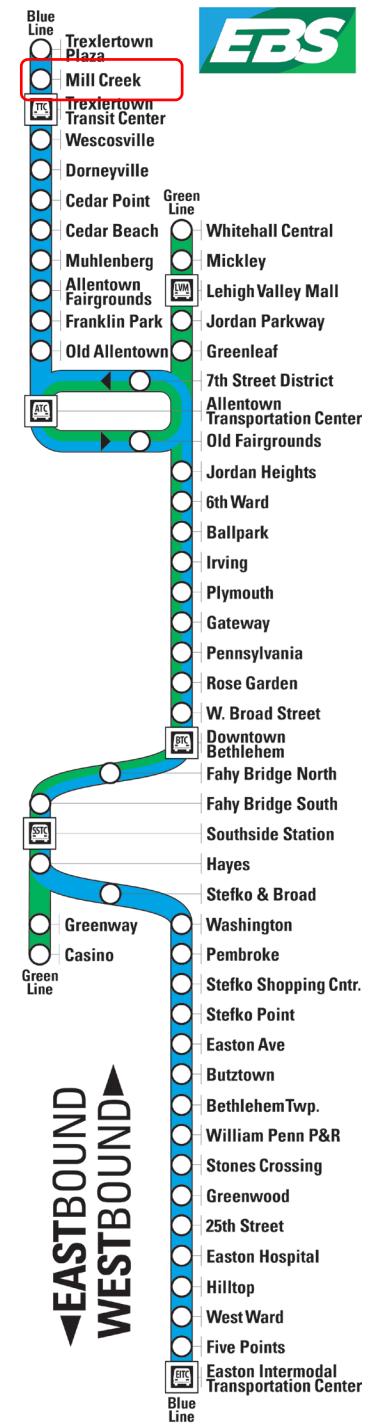
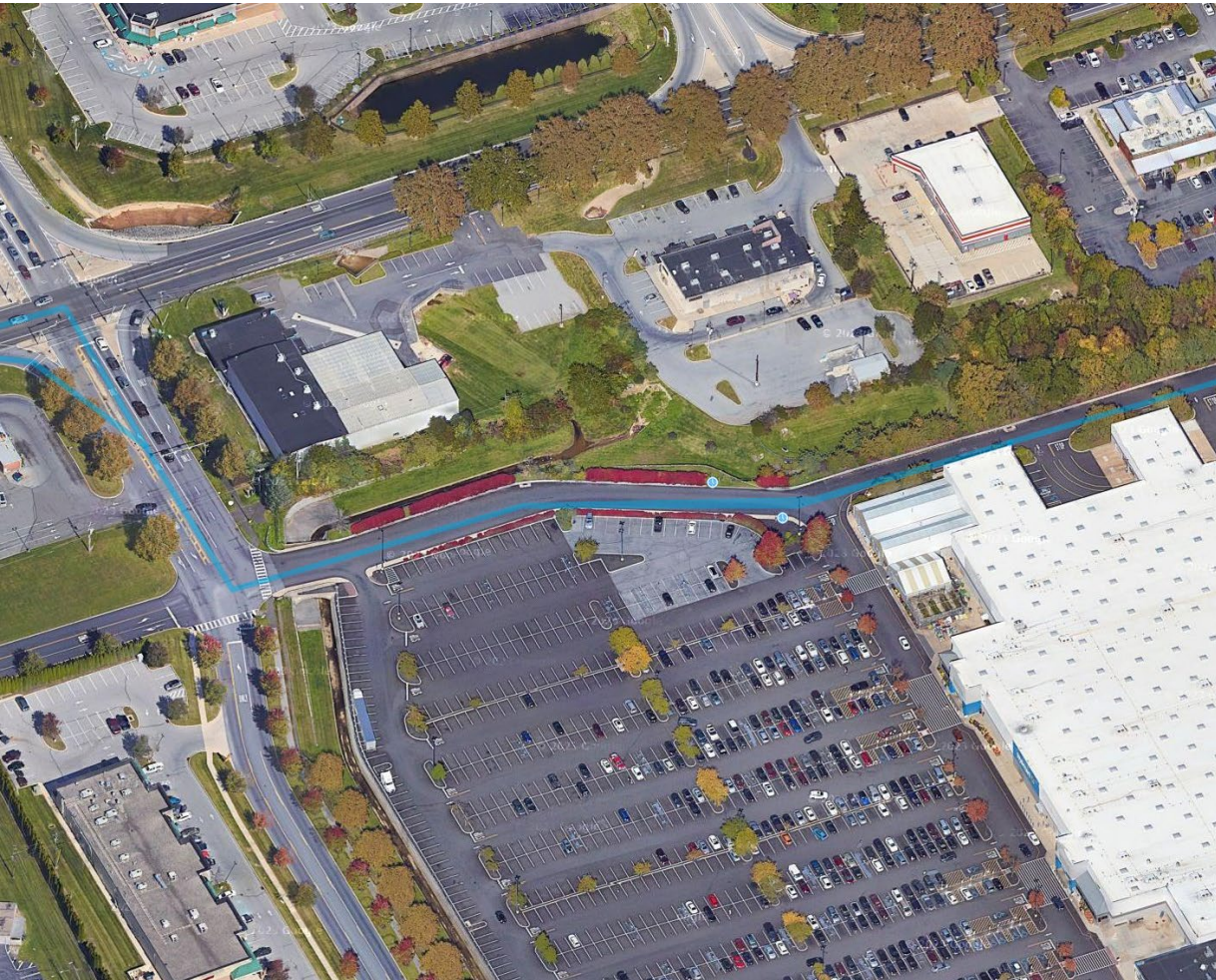
Station Name: **Mill Creek**

EBS Line: **Blue**

Municipality: **Lower Macungie Twp**

ROW: **Private**

- 2015 Hamilton Boulevard Corridor Study
- Bus Connection to Trexlertown TC & Movie Tavern Site completed.



EBS Progress to Date

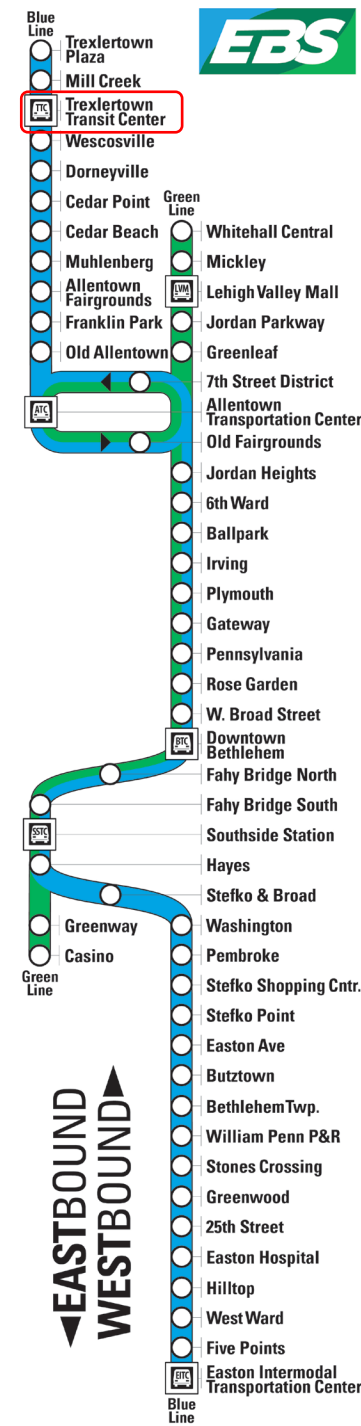
Station Name: **Trexlerstown Transit Center**

EBS Line: **Blue**

Municipality: **Lower Macungie Twp**

ROW: **Private**

- Major Transfer Point
- 2015 Hamilton Boulevard Corridor Study
- Bus Connection to Mill Creek & Walmart Site completed.
- Shelter & Pedestrian Access Completed.
- Site Access approved with Private entity.



EBS Progress to Date

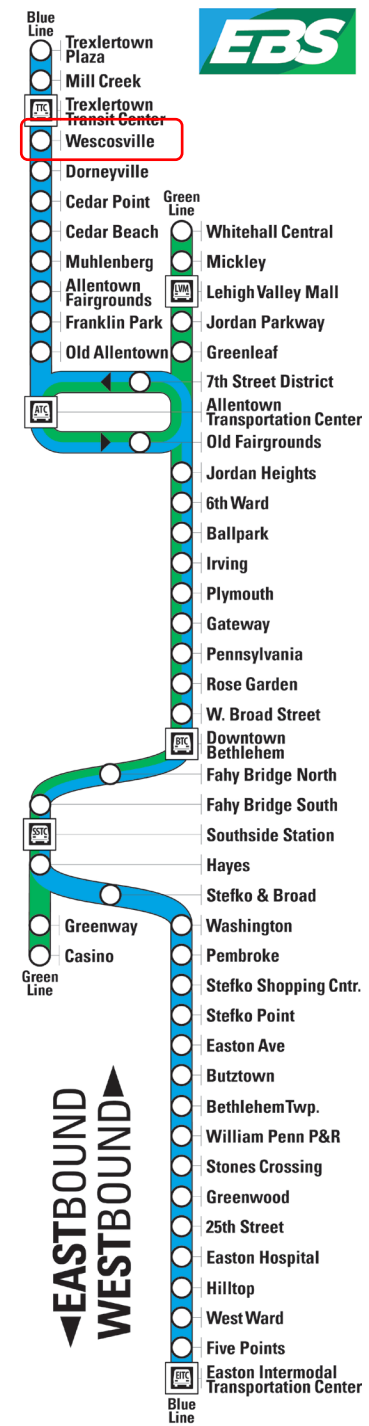
Station Name: **Wescosville**

EBS Line: **Blue**

Municipality: **Lower Macungie Twp**

ROW: **Private**

- 2015 Hamilton Boulevard Corridor Study
- Shelter & Pedestrian Access Completed.
- Site Access approved with Private entity.



EBS Progress to Date

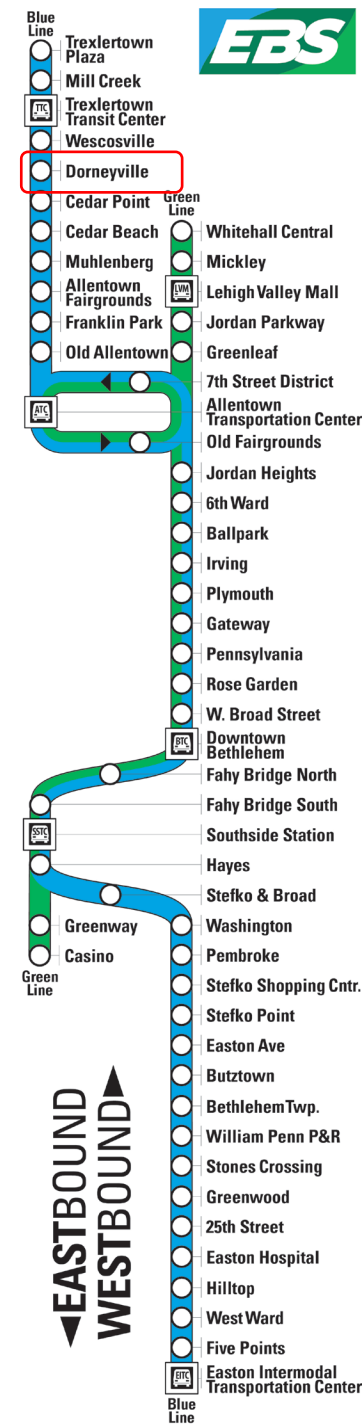
Station Name: **Dorneyville**

EBS Line: **Blue**

Municipality: **South Whitehall Twp**

ROW: **PennDOT**

- November 2022 Joint Meeting
 - Dorney Park, SWT, LANTA
 - Pedestrian Crossing Solution Needed
- Sidewalks nearing construction on Dorney Park property



EBS Progress to Date

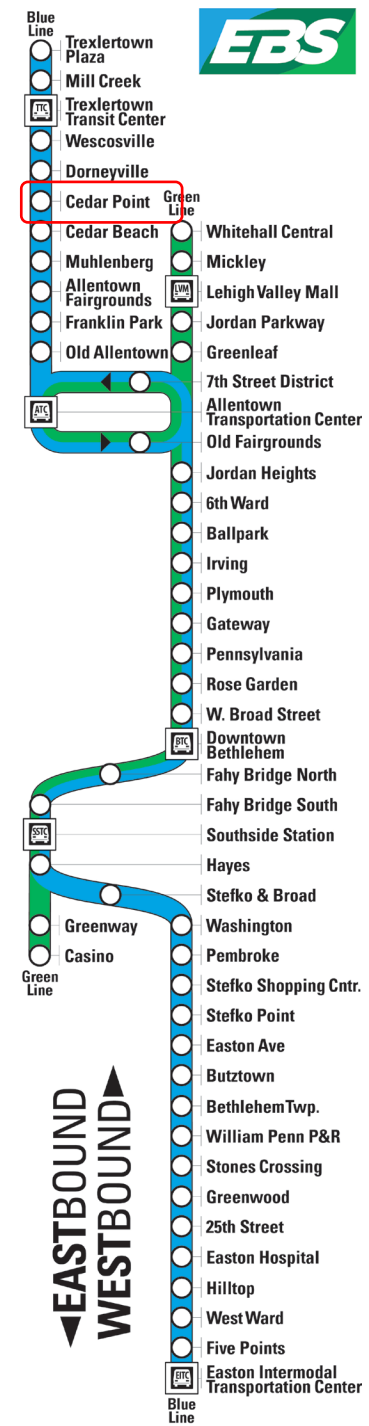
Station Name: **Cedar Point**

EBS Line: **Blue**

Municipality: **Allentown**

ROW: **Private**

- Major Transfer Point
- Property Management Support
- 1 of 2 shelters recently replaced
- EB Platform currently ADA non-compliant



EBS Progress to Date

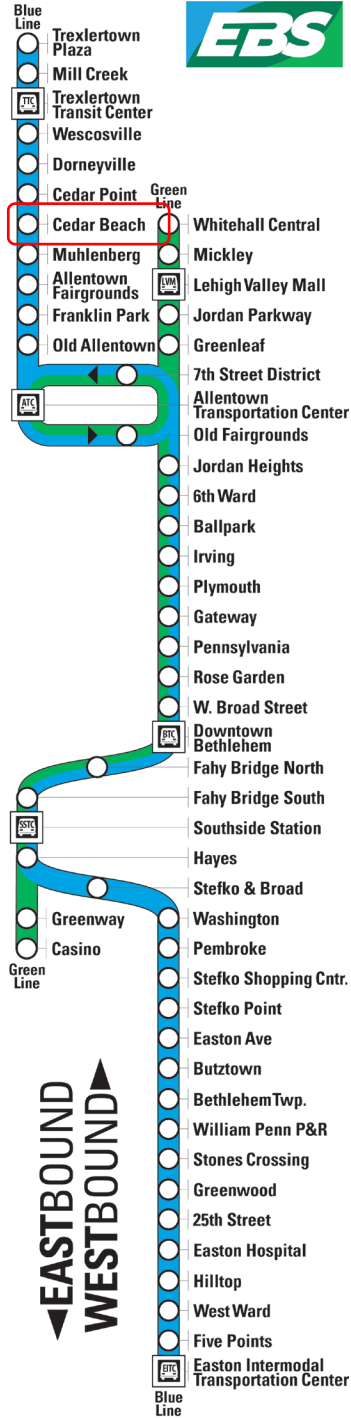
Station Name: **Cedar Beach**

EBS Line: **Blue**

Municipality: **Allentown**

ROW: **Municipal**

- Coordination with Allentown Parks needed.



EBS Progress to Date

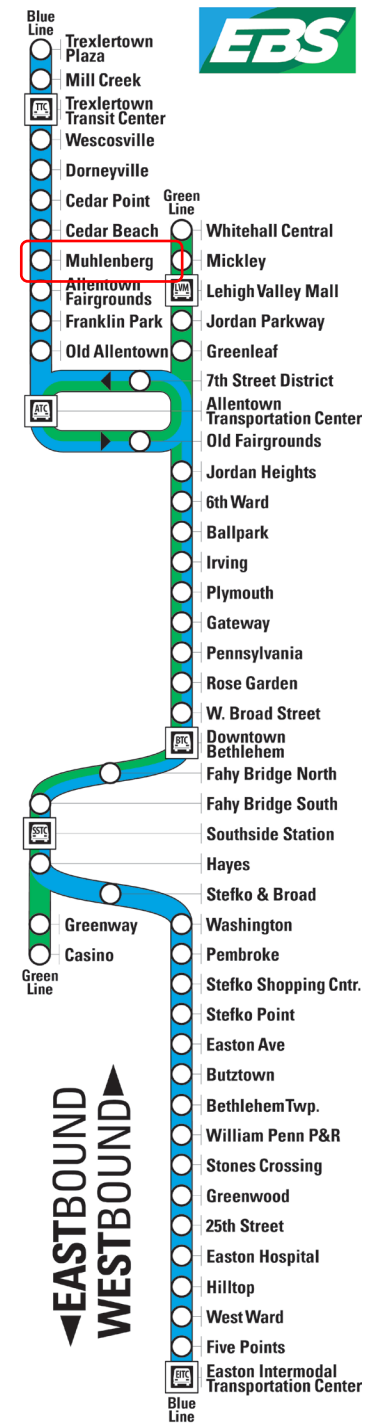
Station Name: **Muhlenberg**

EBS Line: **Blue**

Municipality: **Allentown**

ROW: **Municipal**

- Dedicated Bus Pullouts in place.



▲ EASTBOUND
▼ WESTBOUND

EBS Progress to Date

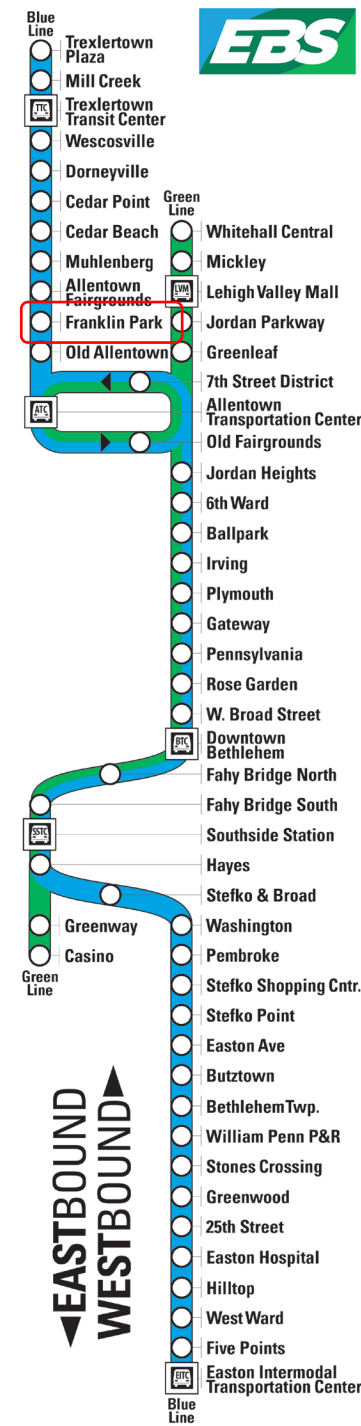
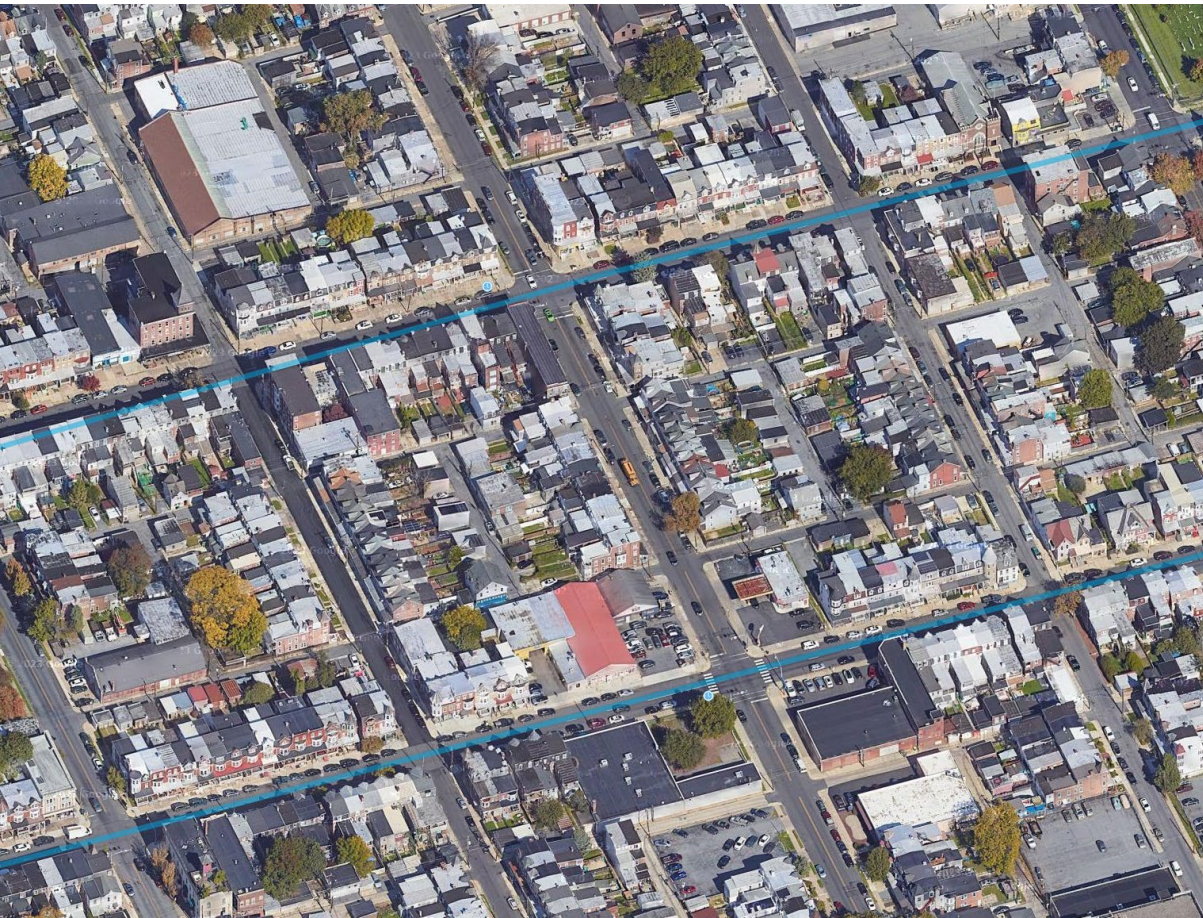
Station Name: **Franklin Park**

EBS Line: **Blue**

Municipality: **Allentown**

ROW: **Municipal**

- Identified as “Mobility Hub” in Allentown Vision 2030.
- Proposed EBS Upzoning in ZONE Allentown code update.
- Shelter Install complete at EB Stop
- Identified as priority transit access point in Allentown Reconnect Grant
- Platform Locations discussed with community at Cohesion meeting



EBS Progress to Date

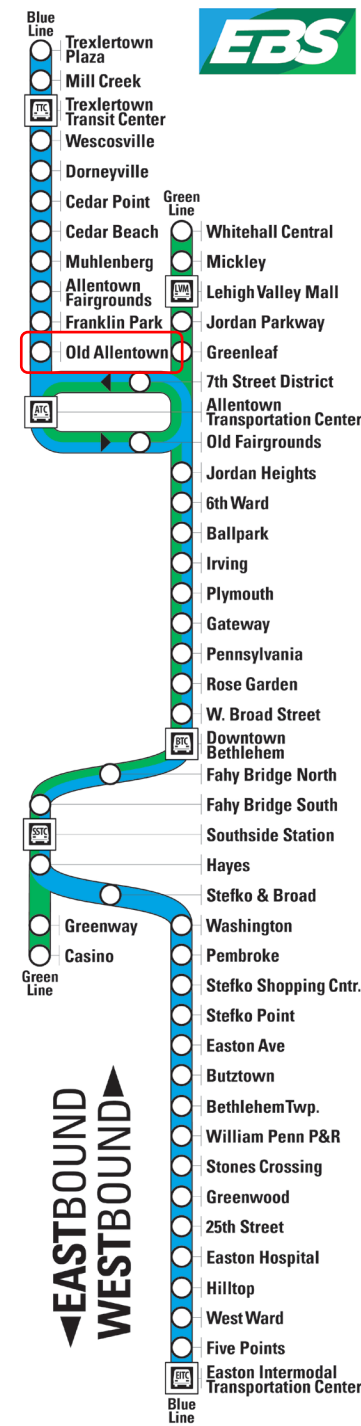
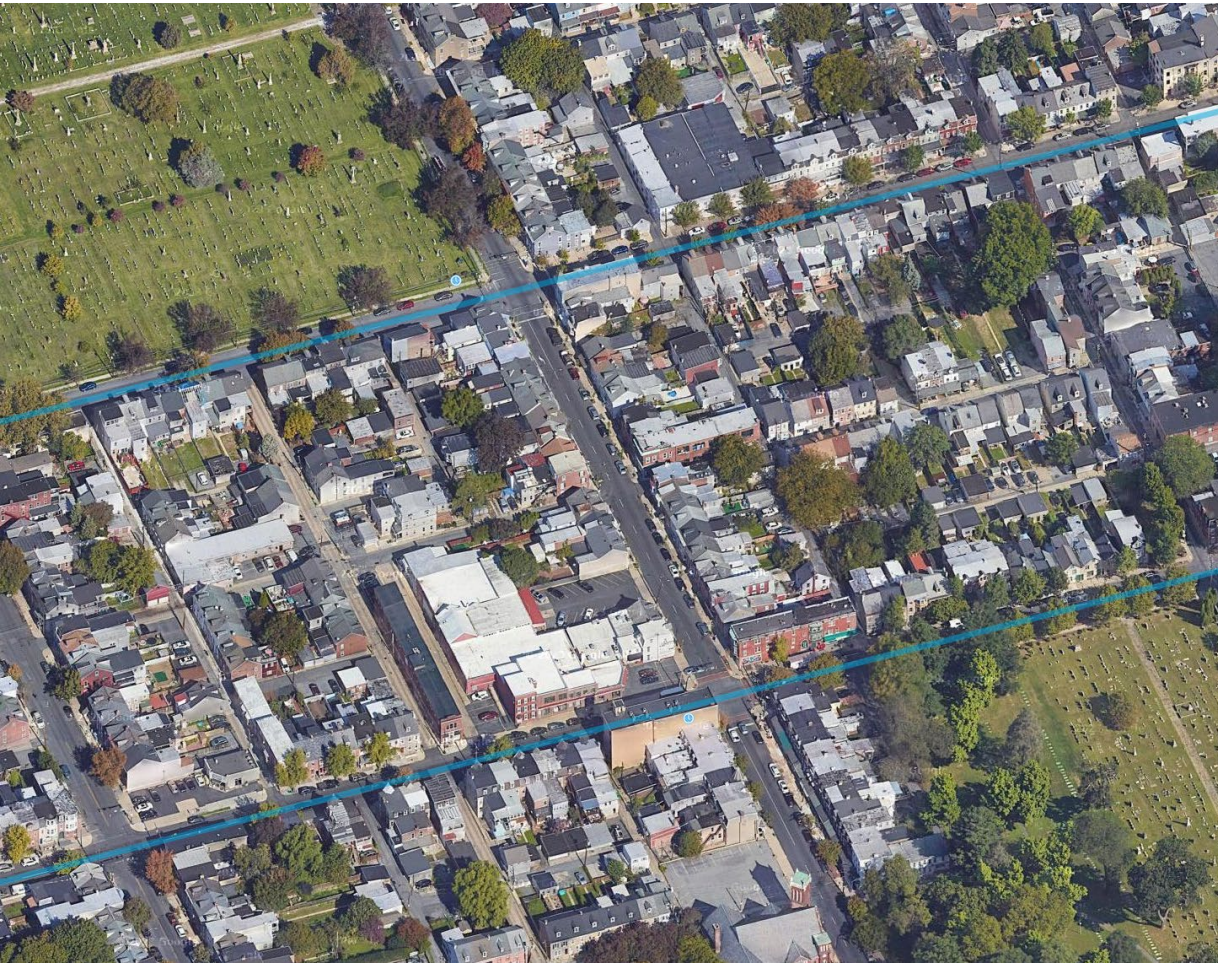
Station Name: **Old Allentown**

EBS Line: **Blue**

Municipality: **Allentown**

ROW: **Municipal**

- Identified as “Mobility Hub” in Allentown Vision 2030.
- Proposed EBS Upzoning in ZONE Allentown code update.
- Identified as priority transit access point in Allentown Recompete Grant



EBS Progress to Date

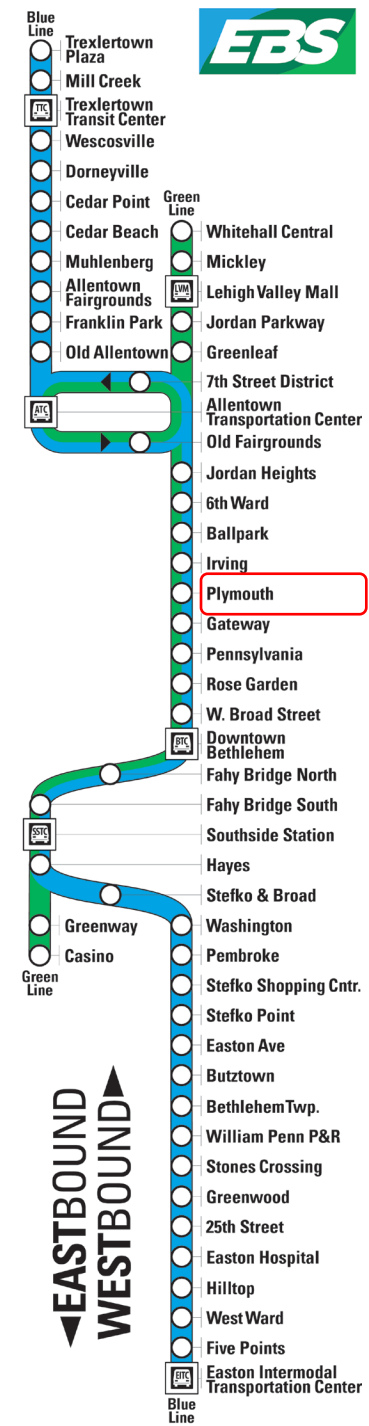
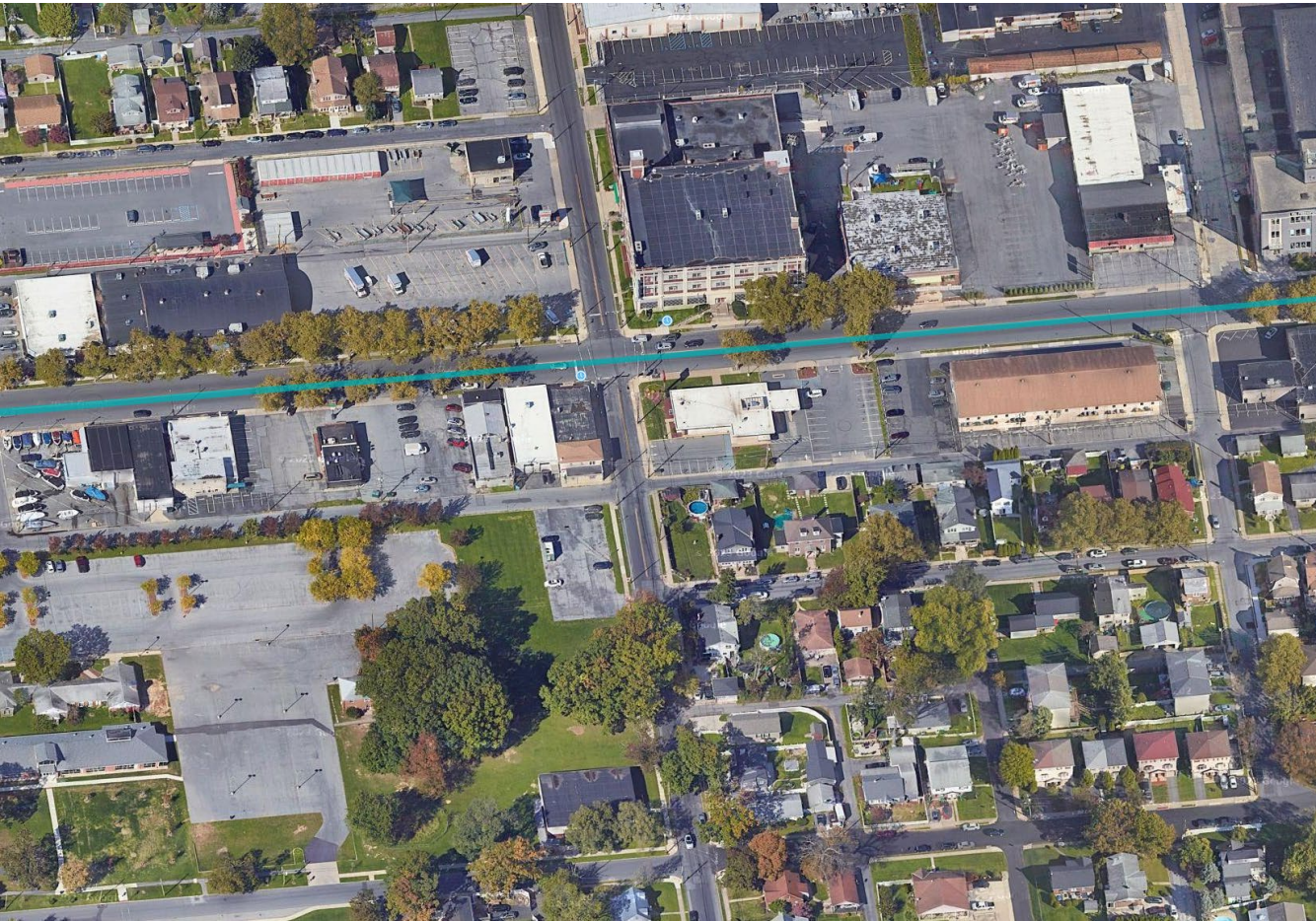
Station Name: **Plymouth**

EBS Line: **Blue & Green**

Municipality: **Allentown**

ROW: **PennDOT**

- Proposed EBS Upzoning in ZONE Allentown code update.
- Priority Action Area for Allentown SS4A
- WB Shelter Recently Upgraded
- High Student & Event Ridership Location



EBS Progress to Date

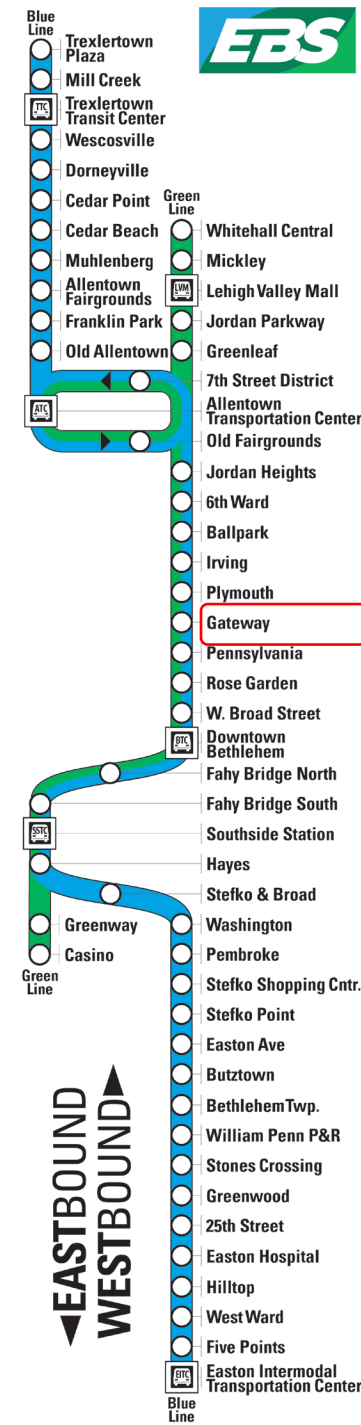
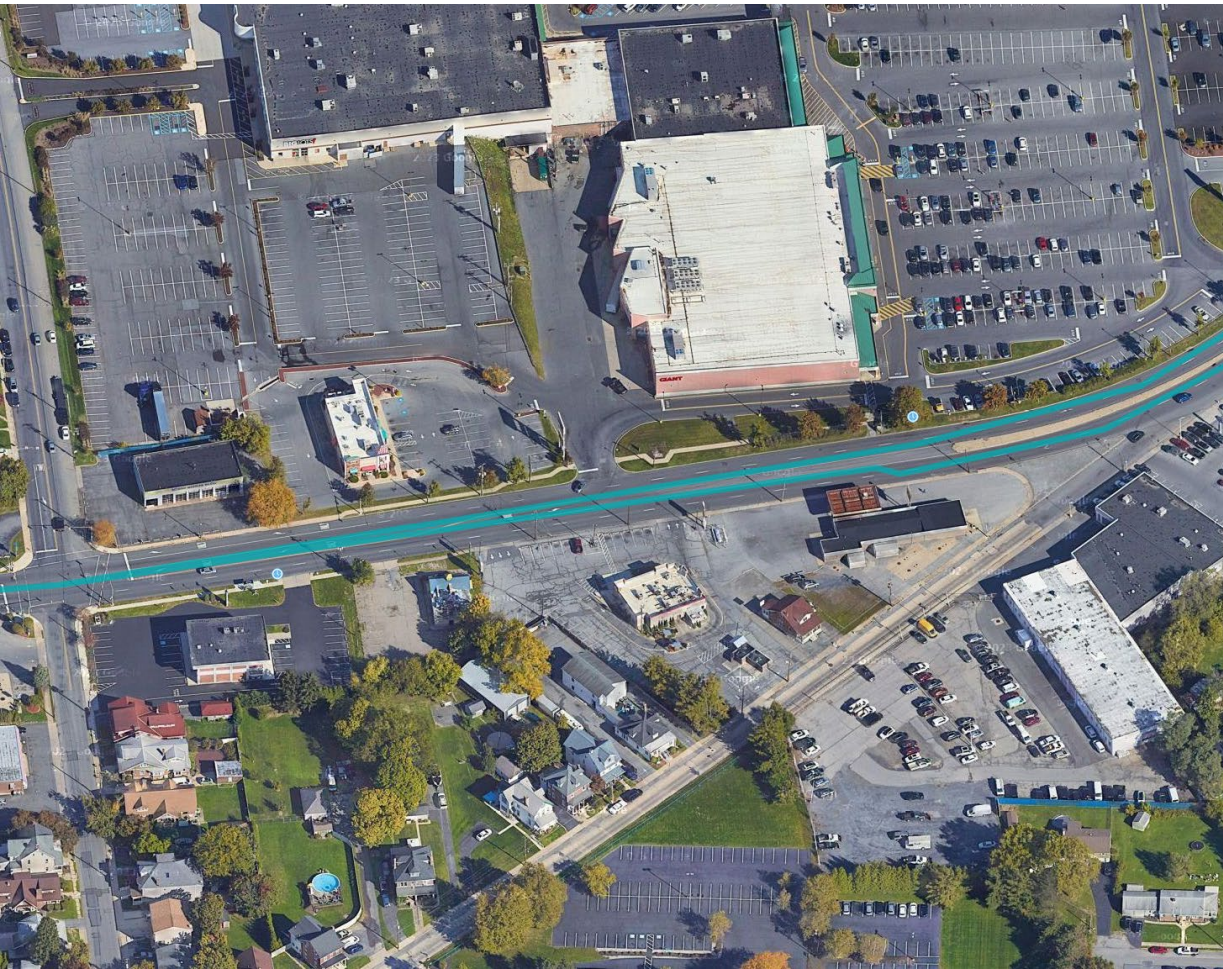
Station Name: **Gateway**

EBS Line: **Blue & Green**

Municipality: **Bethlehem**

ROW: **PennDOT**

- Shelters Recently Installed
- 2022 Transit First Study Project #6.
- Coordination with Lehigh Shopping Center on sightline vegetation issues & internal site access.
- EB Platform Location may shift to align with pedestrian crossing.
- EBS Included in 2021 Bethlehem Climate Action Plan as initiative T1.1



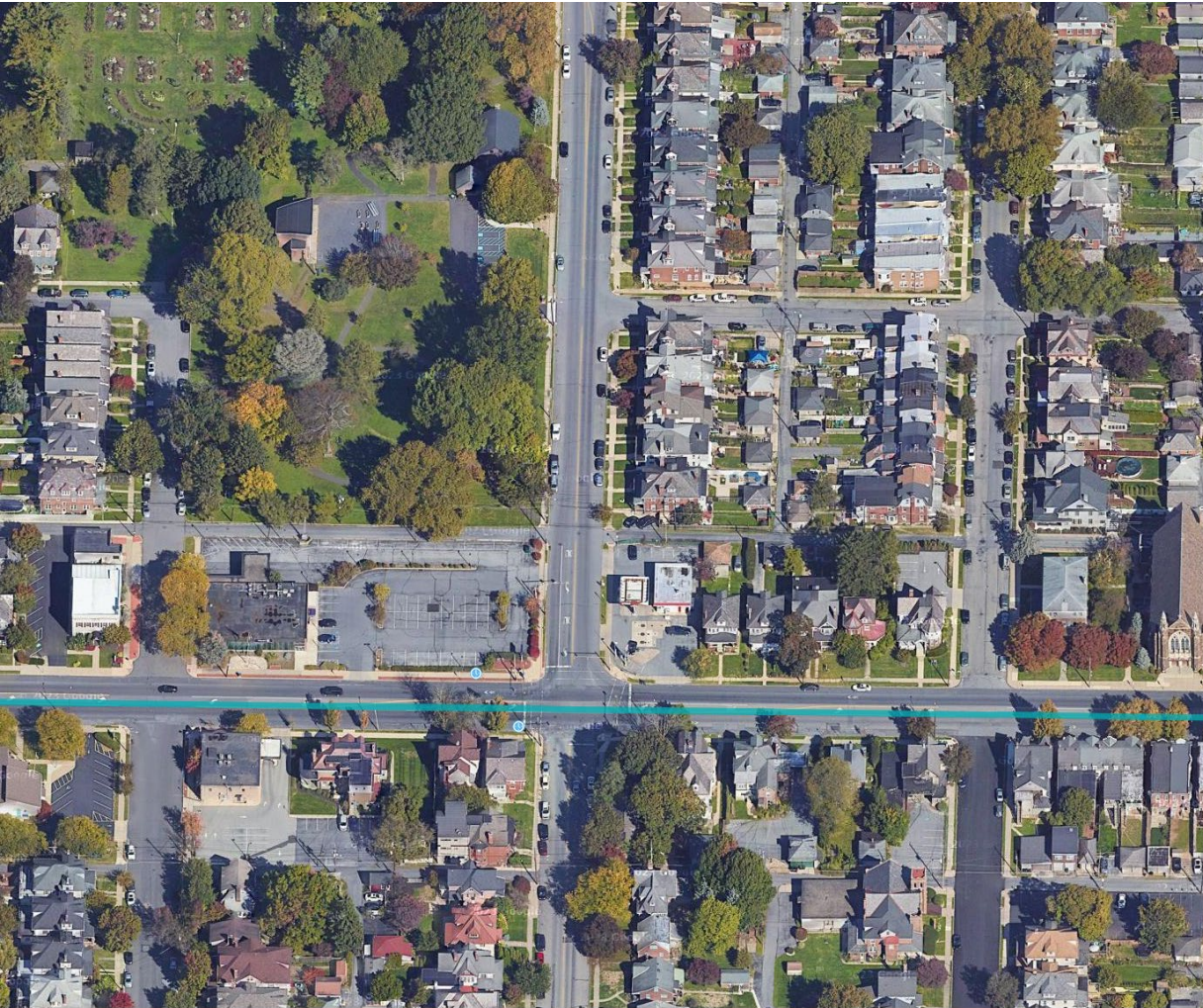
EBS Progress to Date

Station Name: **Rose Garden**

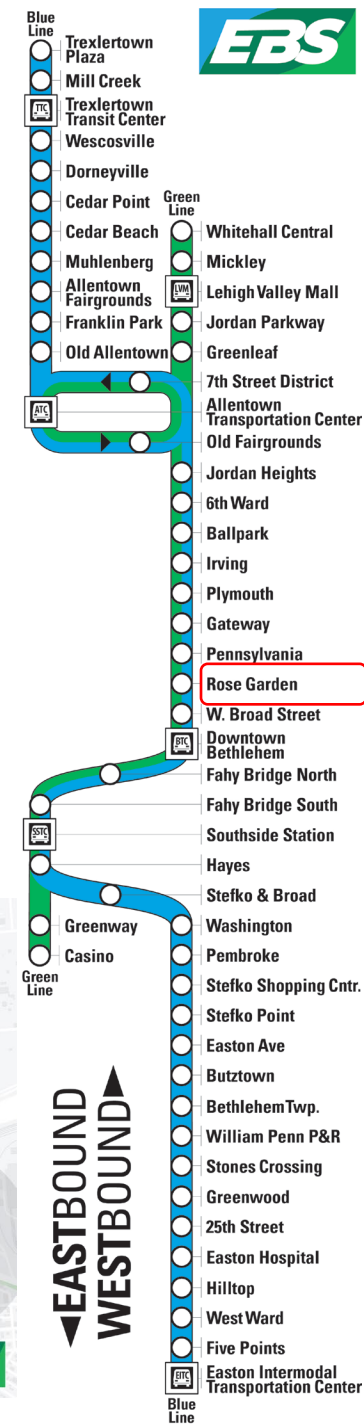
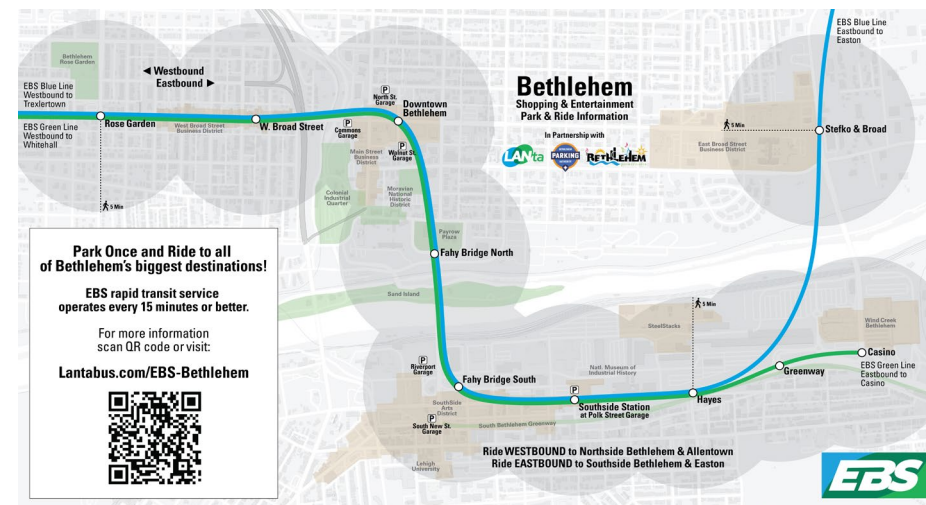
EBS Line: **Blue & Green**

Municipality: **Bethlehem**

ROW: **Municipal**



- Station Platform Islands included in 2021 Broad Street Active Transportation Plan
- \$10 million Implementation Grant received through SS4A
- EBS is official Event shuttle in partnership with BPA, LANTA, and City of Bethlehem.
- EBS Included in 2021 Bethlehem Climate Action Plan as initiative T1.1



EBS Progress to Date

Station Name: **W. Broad Street**

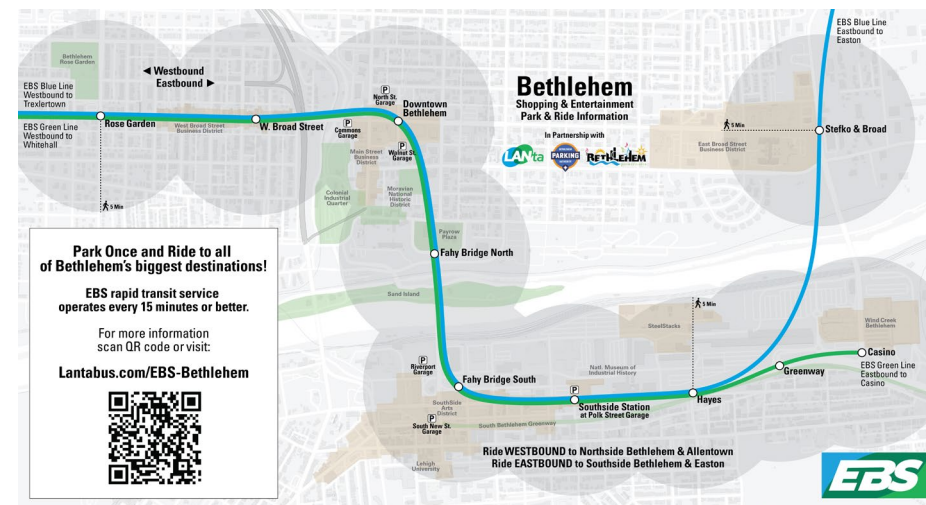
EBS Line: **Blue & Green**

Municipality: **Bethlehem**

ROW: **Municipal**



- Station Platform Islands included in 2021 Broad Street Active Transportation Plan
- \$10 million Implementation Grant received through SS4A
- Station Planning may shift boarding Locations
- EBS is official Event shuttle in partnership with BPA, LANTA, and City of Bethlehem.
- EBS Included in 2021 Bethlehem Climate Action Plan as initiative T1.1



EBS Progress to Date

Station Name: **Downtown Bethlehem**

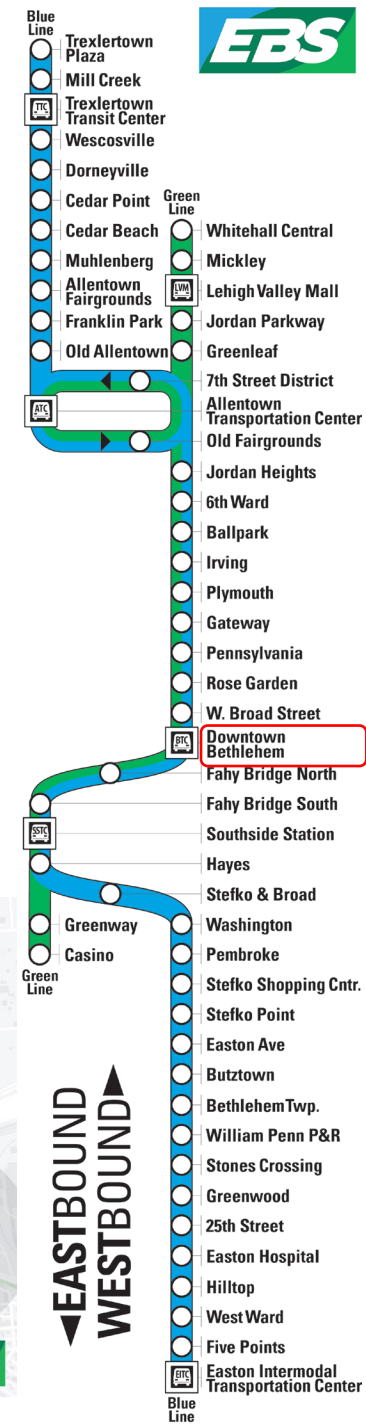
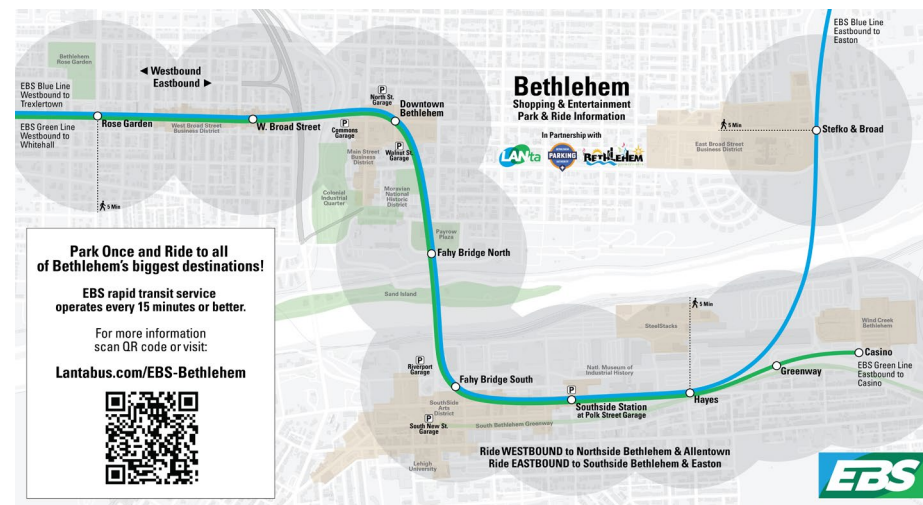
EBS Line: **Blue & Green**

Municipality: **Bethlehem**

ROW: **Municipal**



- EBS is official Event shuttle in partnership with BPA, LANTA, and City of Bethlehem.
- City Park donated and future EBS Station in coordination with new Walnut Street Garage and CAT-LV.
- Modified Transit First Project #9
- EBS Included in 2021 Bethlehem Climate Action Plan as initiative T1.1



EBS Progress to Date

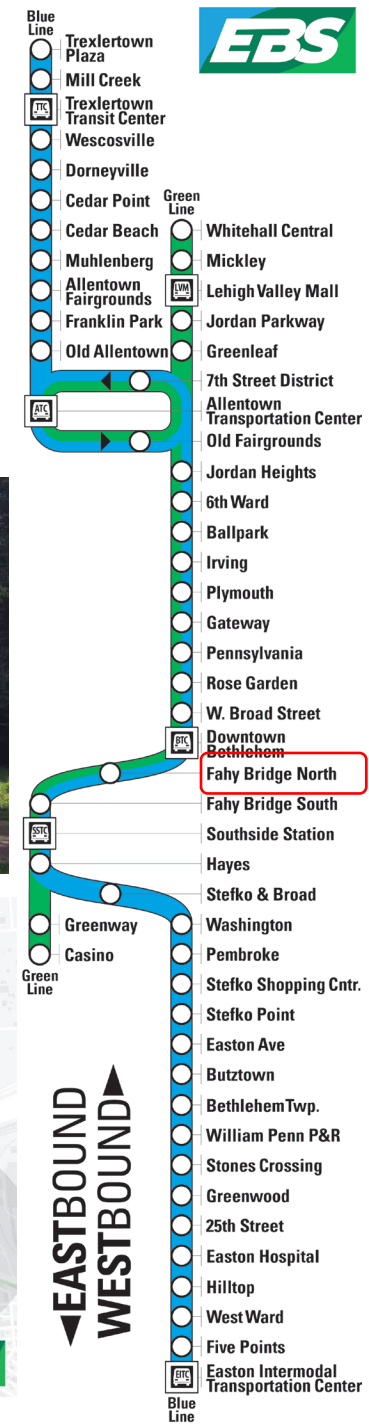
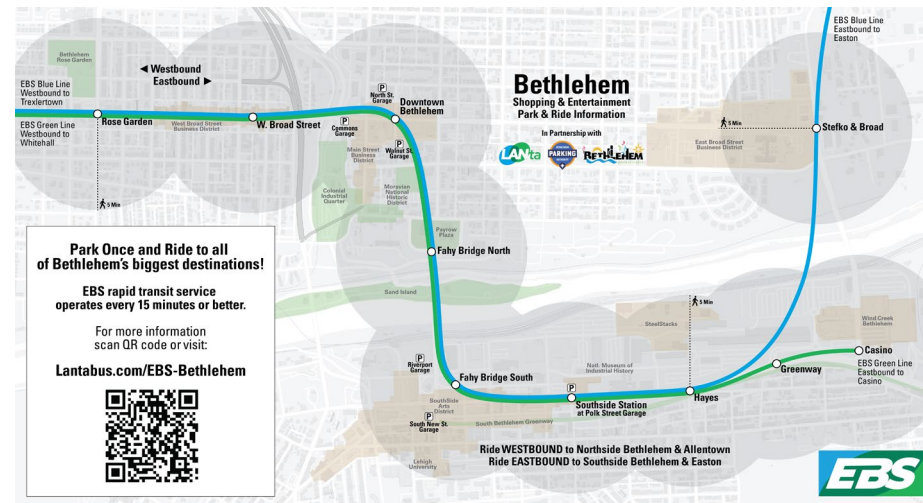
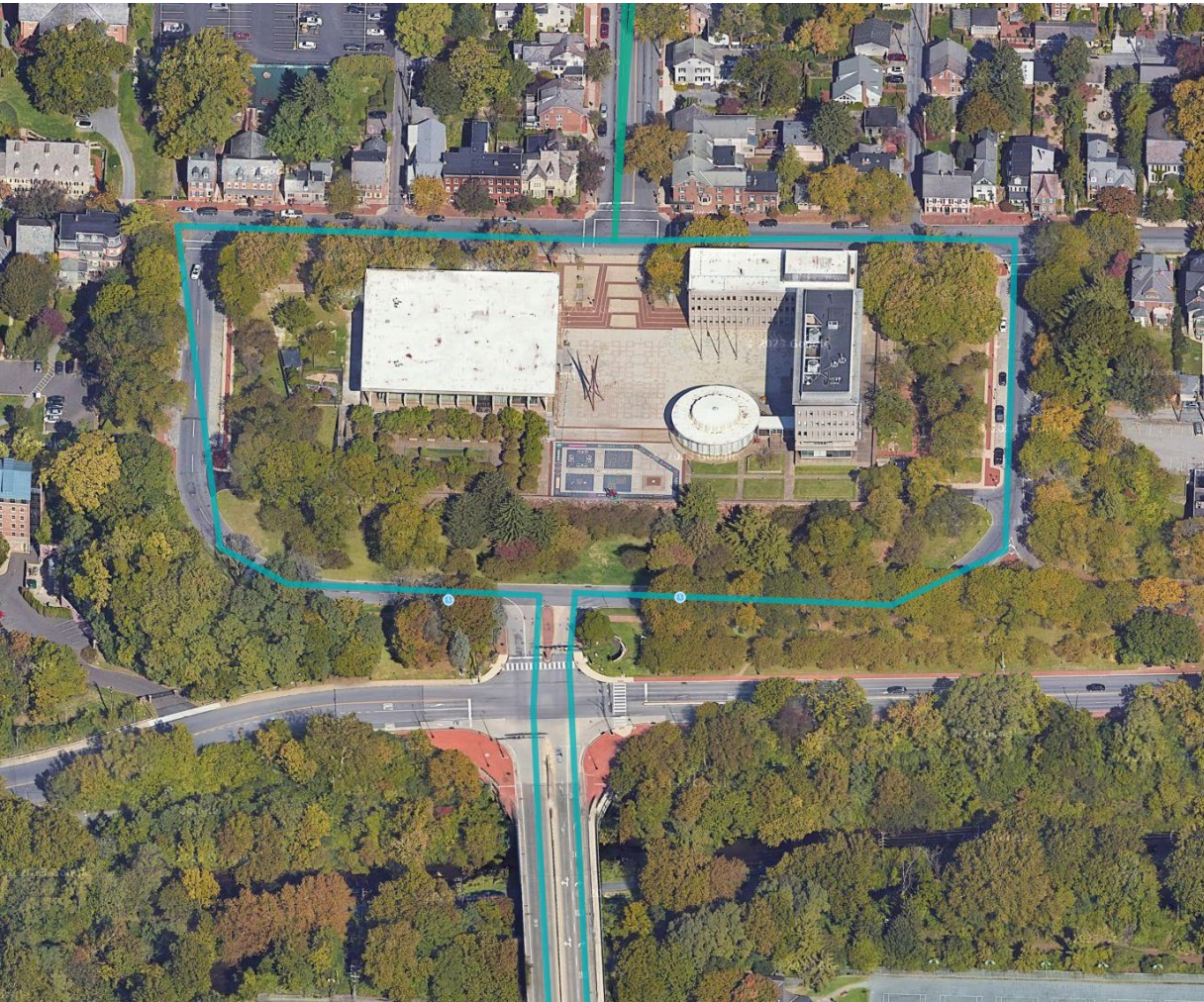
Station Name: **Fahy Bridge North**

EBS Line: **Blue & Green**

Municipality: **Bethlehem**

ROW: **Municipal**

- EBS is official Event shuttle in partnership with BPA, LANTA, and City of Bethlehem.
- Unique Shelter Design Competition potential opportunity
- EBS Included in 2021 Bethlehem Climate Action Plan as initiative T1.1



EBS Progress to Date

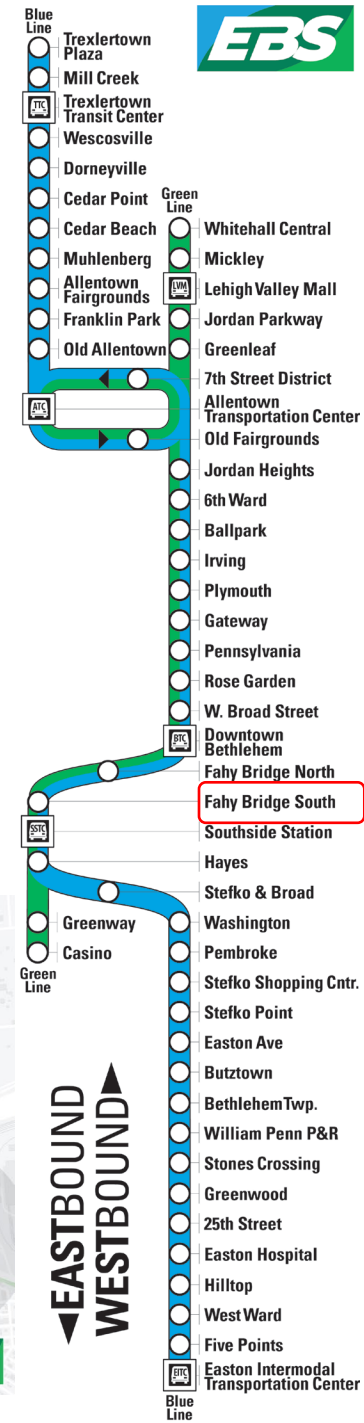
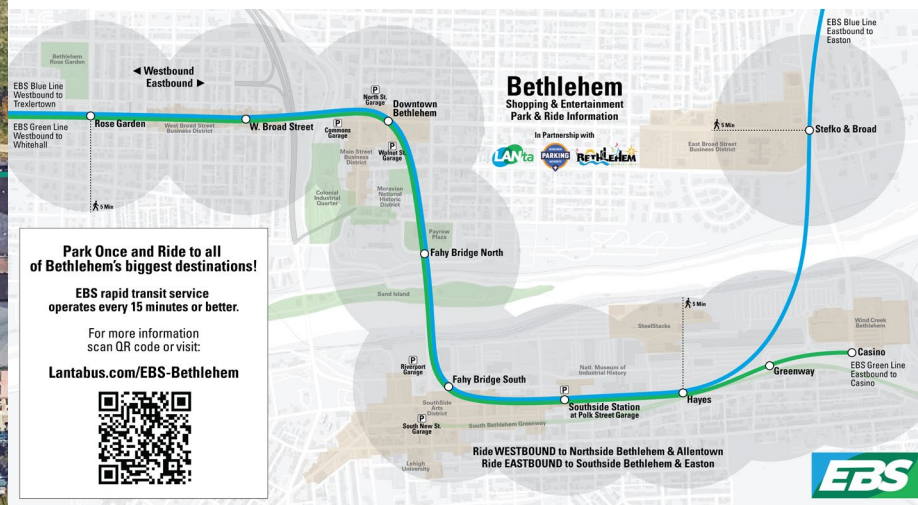
Station Name: **Fahy Bridge South**

EBS Line: **Blue & Green**

Municipality: **Bethlehem**

ROW: **Municipal**

- EBS is official Event shuttle in partnership with BPA, LANTA, and City of Bethlehem.
- City Park donated and future EBS Station
- Current Lehigh University semester project designing station access and amenities in partnership with City of Bethlehem.
- EBS Included in 2021 Bethlehem Climate Action Plan as initiative T1.1



EBS Progress to Date

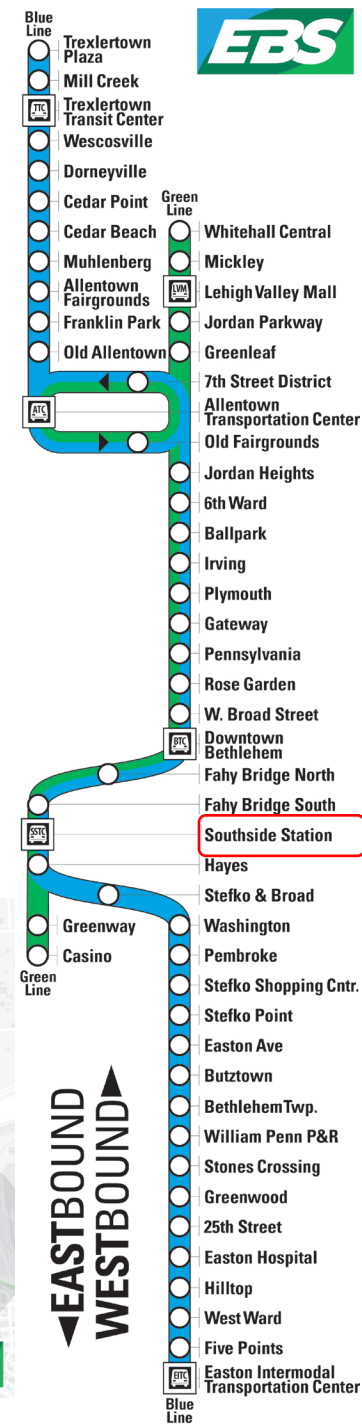
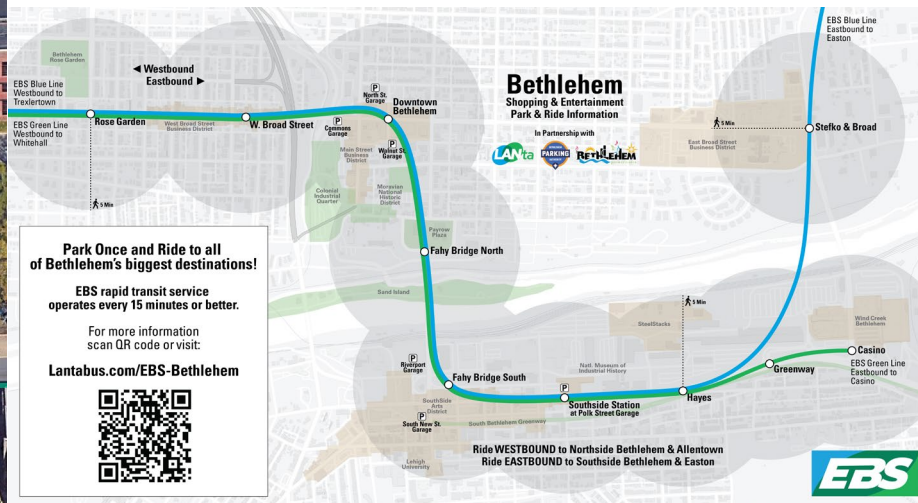
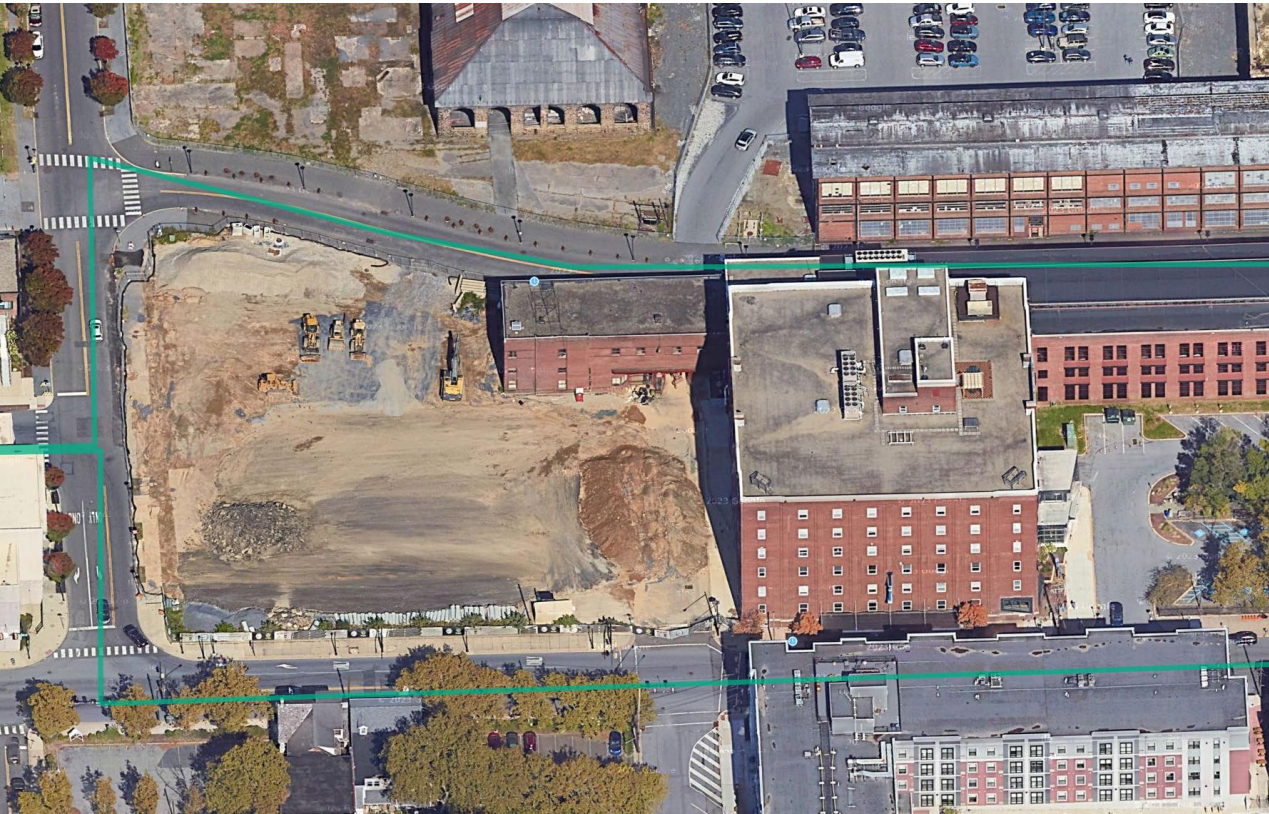
Station Name: **Southside Station**

EBS Line: **Blue & Green**

Municipality: **Bethlehem**

ROW: **Municipal**

- EBS is official Event shuttle in partnership with BPA, LANTA, and City of Bethlehem.
- BPA Polk Street Garage built as Multimodal Park & Ride featuring EBS realtime and wayfinding signage.
- EBS Included in 2021 Bethlehem Climate Action Plan as initiative T1.1



EBS Progress to Date

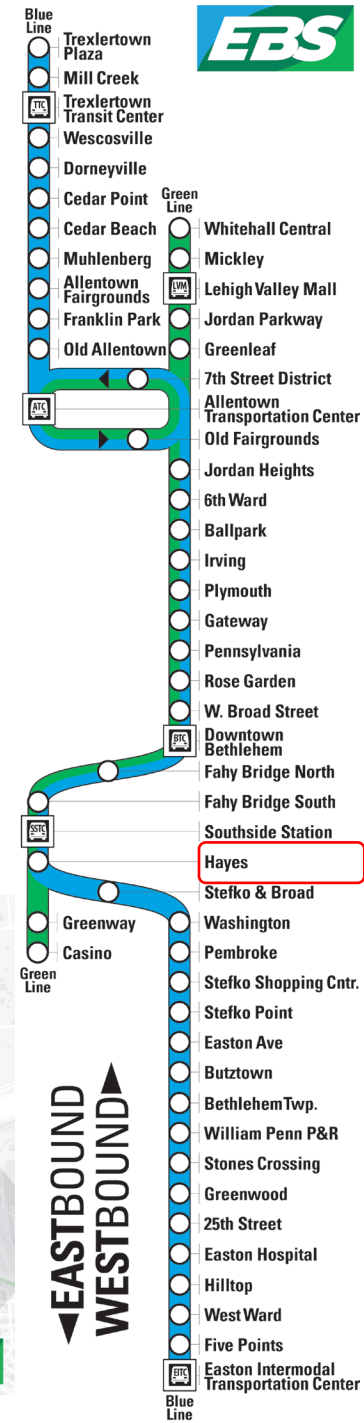
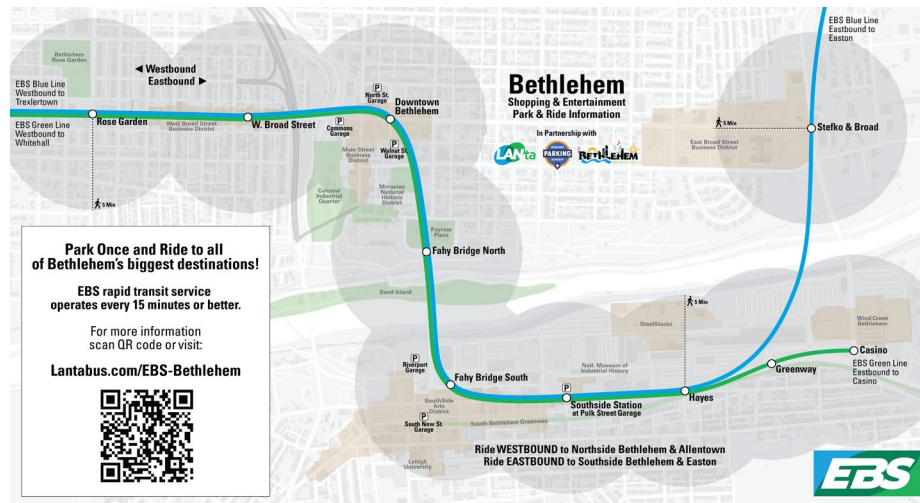
Station Name: **Hayes**

EBS Line: **Blue & Green**

Municipality: **Bethlehem**

ROW: **PennDOT**

- EBS is official Event shuttle in partnership with BPA, LANTA, and City of Bethlehem.
- Station Planning needed for EB Farside Shelter
- EBS Included in 2021 Bethlehem Climate Action Plan as initiative T1.1



EBS Progress to Date

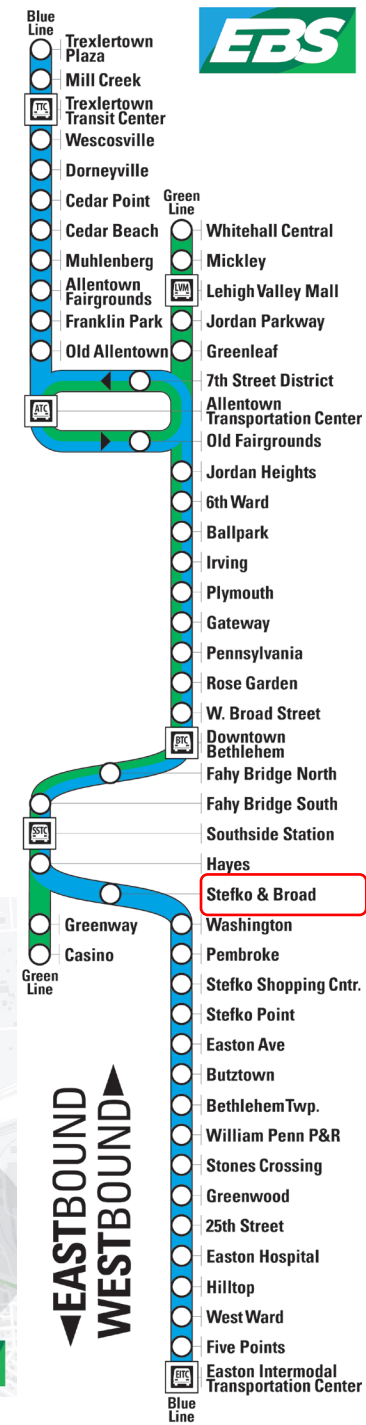
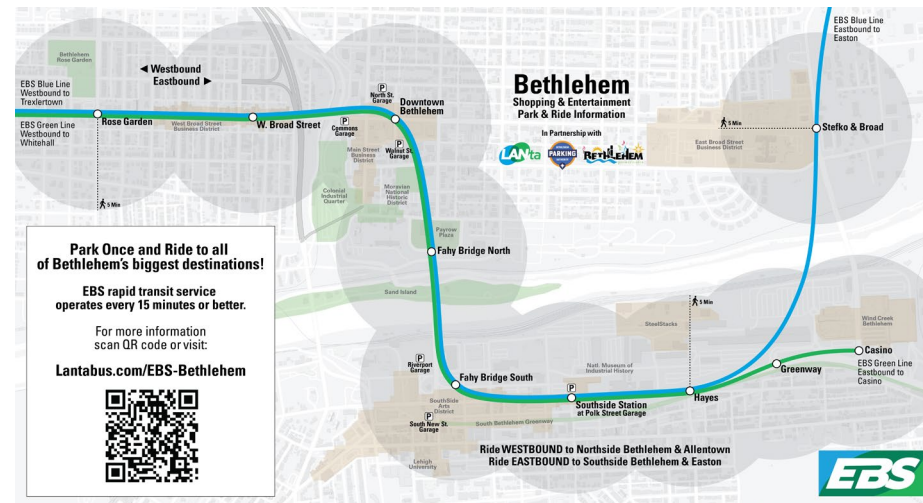
Station Name: **Stefko & Broad**

EBS Line: **Blue**

Municipality: **Bethlehem**

ROW: **Municipal**

- EBS is official Event shuttle in partnership with BPA, LANTA, and City of Bethlehem.
- New Shelters and sidewalk are in engineering for both EB & WB stops.
- Station Access included in HUD Pembroke Choice Neighborhood Plan
- EBS Included in 2021 Bethlehem Climate Action Plan as initiative T1.1



EBS Progress to Date

Station Name: **Pembroke**

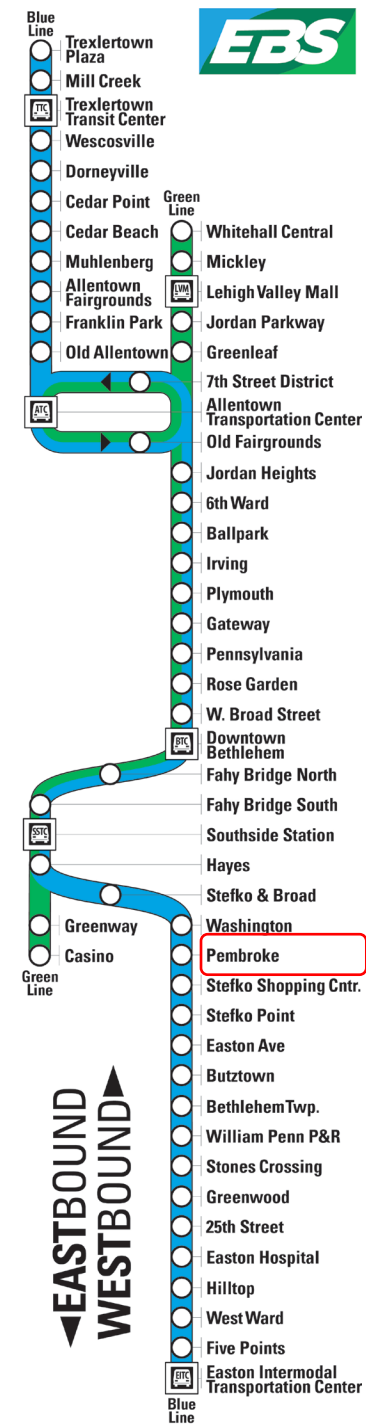
EBS Line: **Blue**

Municipality: **Bethlehem**

ROW: **Municipal**



- Station Access included in HUD Pembroke Choice Neighborhood Plan
- Crosswalk at Station included as priority treatment in HUD Pembroke Choice Neighborhood Plan.
- Marvine Triangle being reconsidered for Pembroke Gateway entrance at EBS station.
- EBS Included in 2021 Bethlehem Climate Action Plan as initiative T1.1
- Bethlehem has expressed interest in transit only lanes on Stefko.



EBS Progress to Date

Station Name: **Stefko Shopping Center**

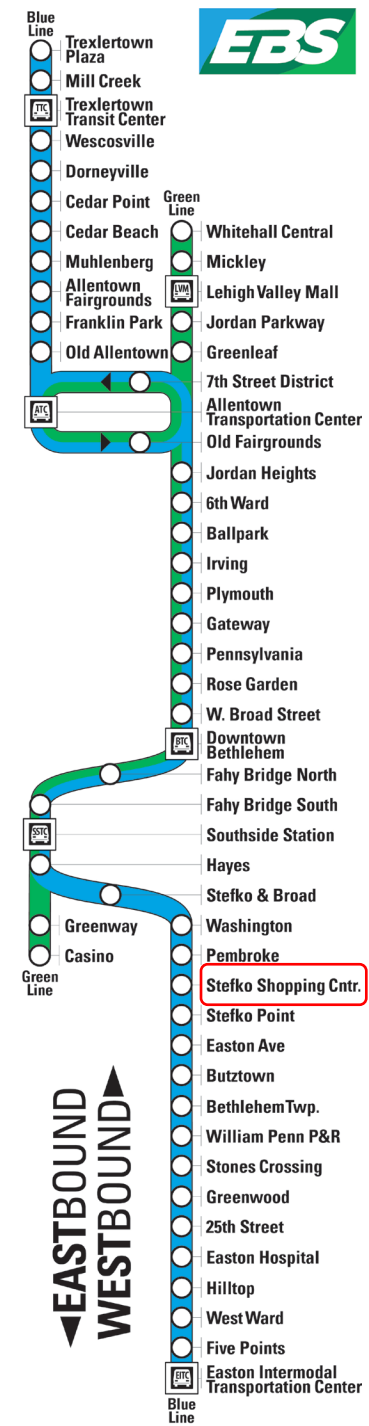
EBS Line: **Blue**

Municipality: **Bethlehem**

ROW: **Municipal**



- Station Access included in HUD Pembroke Choice Neighborhood Plan
- Eastbound Shelter recently rebuilt.
- EBS Included in 2021 Bethlehem Climate Action Plan as initiative T1.1
- Bethlehem has expressed interest in transit only lanes on Stefko.



EBS Progress to Date

Station Name: **Stefko Point**

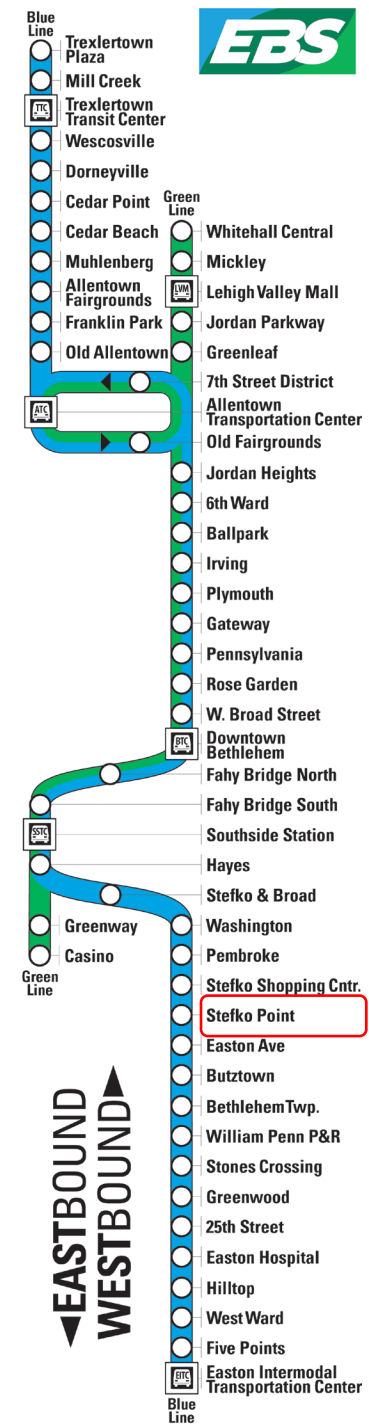
EBS Line: **Blue**

Municipality: **Bethlehem**

ROW: **Municipal**



- Major Connection Point
- EBS Included in 2021 Bethlehem Climate Action Plan as initiative T1.1
- Westbound Shelter recently built.
- Bethlehem has expressed interest in transit only lanes on Stefko.



EBS Progress to Date

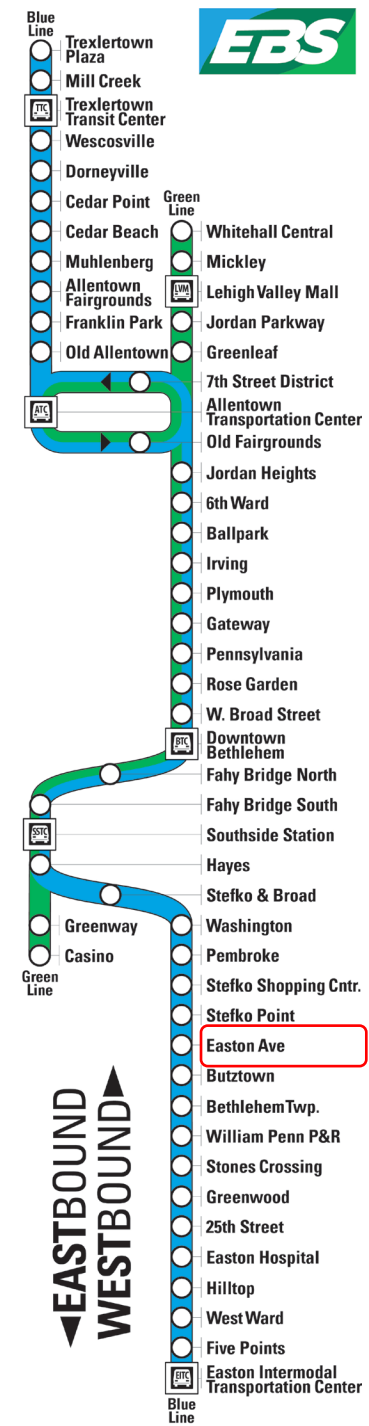
Station Name: **Easton Ave**

EBS Line: **Blue**

Municipality: **Bethlehem/Bethlehem Twp**

ROW: **PennDOT**

- EBS Included in 2021 Bethlehem Climate Action Plan as initiative T1.1



EBS Progress to Date

Station Name: **Butztown**

EBS Line: **Blue**

Municipality: **Bethlehem Twp**

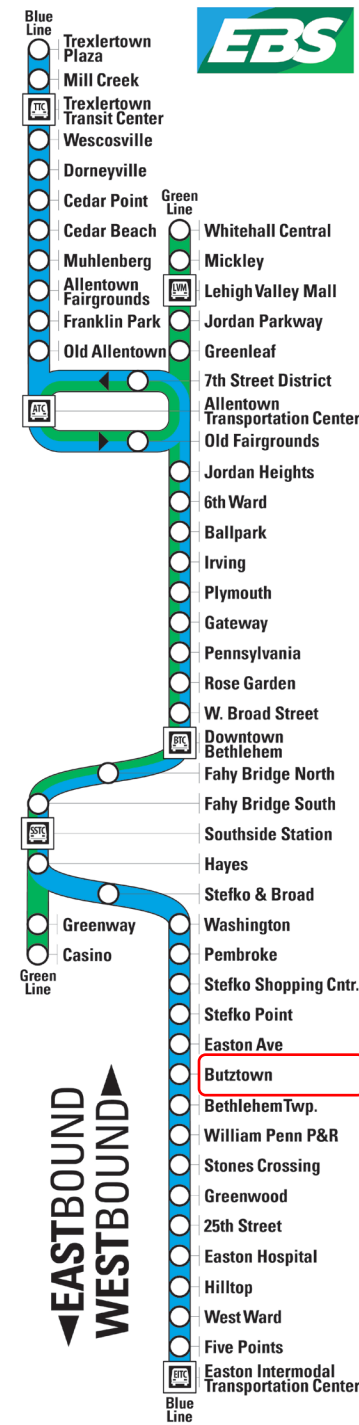
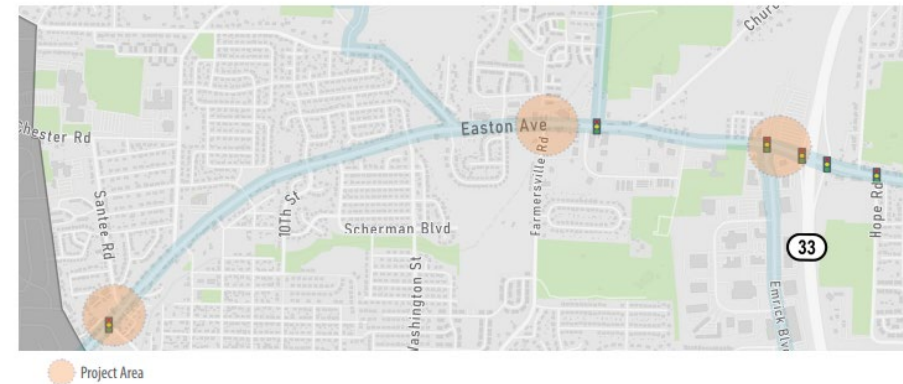
ROW: **PennDOT**

- EBS Included in 2023 Bethlehem Twp Active Transportation Plan
- Butztown Station is a priority Project Area featuring potential new pedestrian connection to municipal library.
- Shelter Improvements included in SALDO



LANTA Enhanced Bus Service (EBS)

Enhanced Bus Service (EBS) is LANTA's initiative to provide Bus Rapid Transit (BRT), which is a mode of transit that provides fast, frequent, and comfortable transit service along a dedicated transit line or corridor. LANTA began this process in 2010 by identifying rapid transit as a regional need, and in 2014 the LANTA Enhanced Bus Service Study was completed (updated in 2022). Core network corridors and alignments were identified and assessed in the study, and have been refined in the years since to finalize corridors and station stop locations. There are three proposed EBS stop locations within the township along Easton Avenue. Pedestrian infrastructure, including sidewalks and crosswalks, is needed to provide access to the EBS service. Ongoing collaboration with LANTA, including design and potential grant funding coordination, will be essential to the continued success of these efforts.



EBS Progress to Date

Station Name: **Bethlehem Twp.**

EBS Line: **Blue**

Municipality: **Bethlehem Twp**

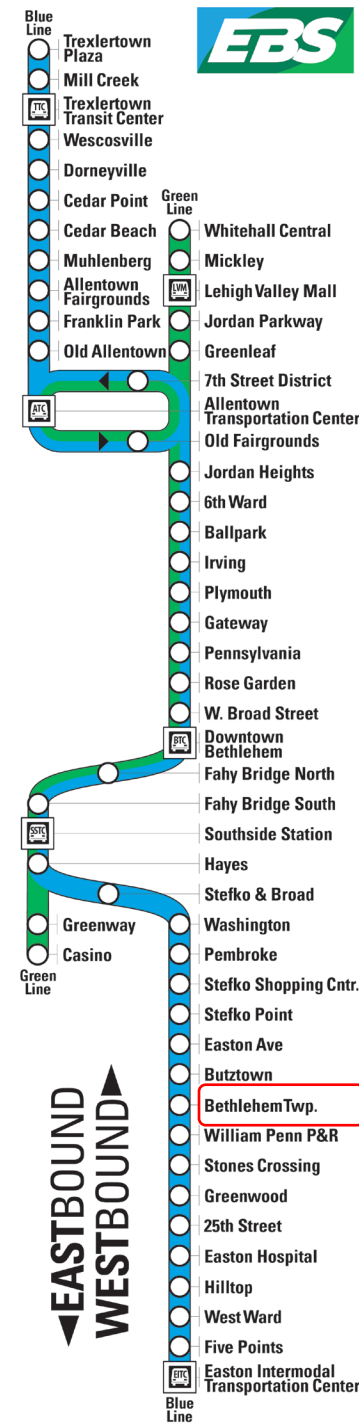
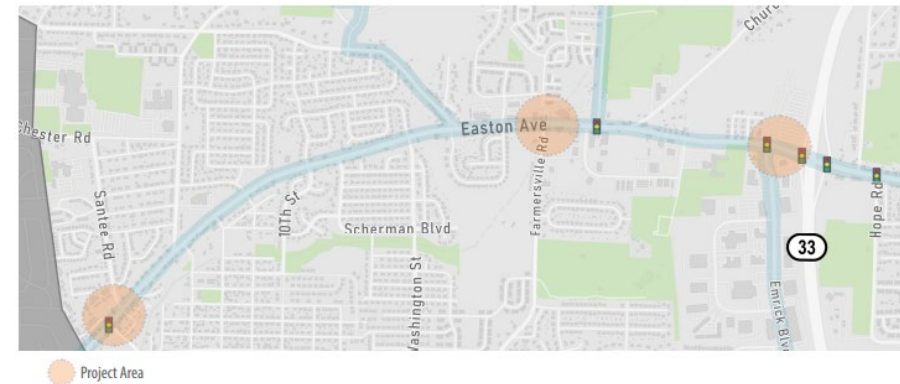
ROW: **PennDOT**

- EBS Included in 2023 Bethlehem Twp Active Transportation Plan
- Bethlehem Twp Station is included as a Project Area to bolster intended urban redevelopment of business district.
- Shelter Improvements included in SALDO



LANTA Enhanced Bus Service (EBS)

Enhanced Bus Service (EBS) is LANTA's initiative to provide Bus Rapid Transit (BRT), which is a mode of transit that provides fast, frequent, and comfortable transit service along a dedicated transit line or corridor. LANTA began this process in 2010 by identifying rapid transit as a regional need, and in 2014 the LANTA Enhanced Bus Service Study was completed (updated in 2022). Core network corridors and alignments were identified and assessed in the study, and have been refined in the years since to finalize corridors and station stop locations. There are three proposed EBS stop locations within the township along Easton Avenue. Pedestrian infrastructure, including sidewalks and crosswalks, is needed to provide access to the EBS service. Ongoing collaboration with LANTA, including design and potential grant funding coordination, will be essential to the continued success of these efforts.



EBS Progress to Date

Station Name: **William Penn Park & Ride**

EBS Line: **Blue**

Municipality: **Bethlehem Twp**

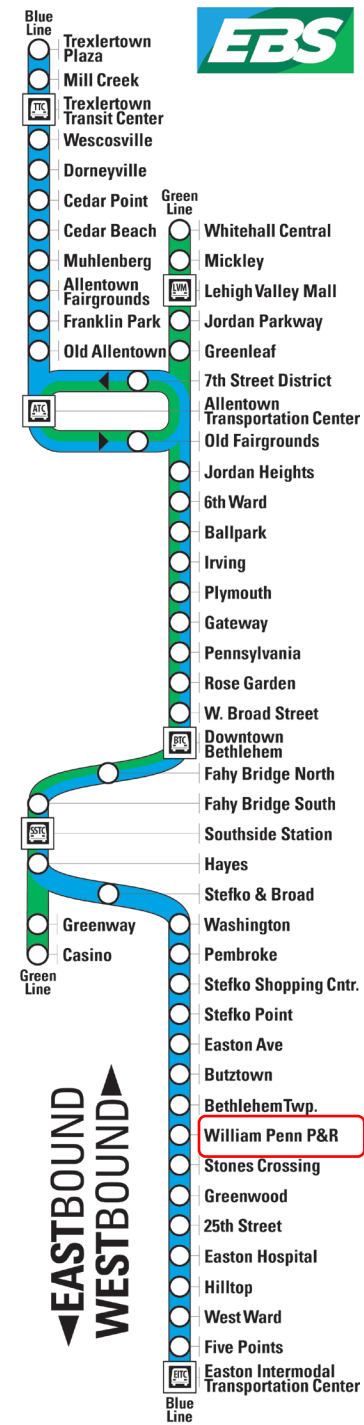
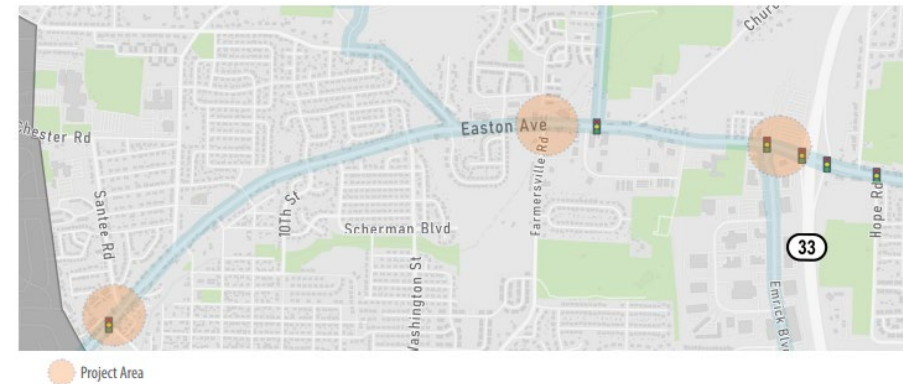
ROW: **PennDOT**

- EBS Included in 2023 Bethlehem Twp Active Transportation Plan
- Major connection point and Park & Ride
- WB shelter recently rebuilt
- Shelter Improvements included in SALDO



LANTA Enhanced Bus Service (EBS)

Enhanced Bus Service (EBS) is LANTA's initiative to provide Bus Rapid Transit (BRT), which is a mode of transit that provides fast, frequent, and comfortable transit service along a dedicated transit line or corridor. LANTA began this process in 2010 by identifying rapid transit as a regional need, and in 2014 the LANTA Enhanced Bus Service Study was completed (updated in 2022). Core network corridors and alignments were identified and assessed in the study, and have been refined in the years since to finalize corridors and station stop locations. There are three proposed EBS stop locations within the township along Easton Avenue. Pedestrian infrastructure, including sidewalks and crosswalks, is needed to provide access to the EBS service. Ongoing collaboration with LANTA, including design and potential grant funding coordination, will be essential to the continued success of these efforts.



EBS Progress to Date

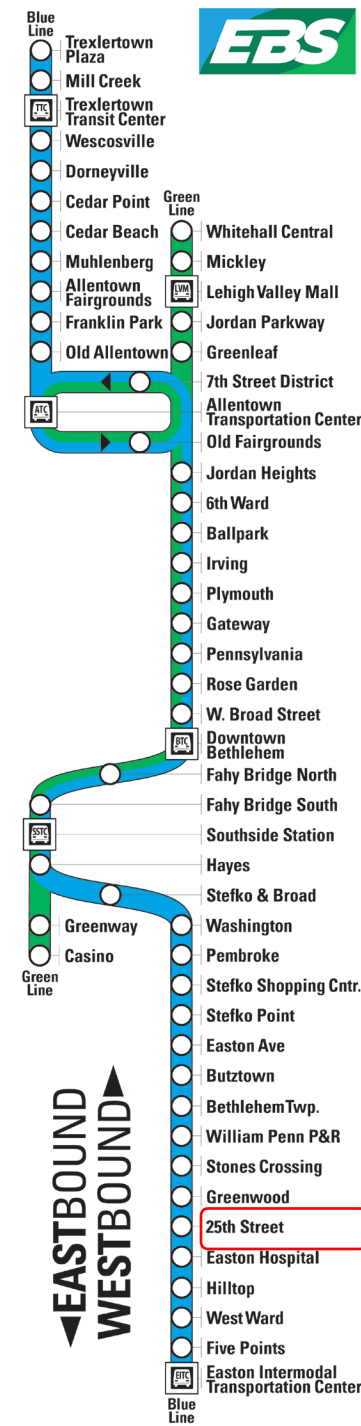
Station Name: **25th Street**

EBS Line: **Blue**

Municipality: **Palmer Twp or Wilson**

ROW: **PennDOT**

- Current Stops in Wilson
- Proposed Stops at Bike Path in Palmer
- Interest in creating Multitmodal Transportation Hub at Bike Path connection.
- EBS Connection being discussed in Easton High School Redevelopment plans.



EBS Progress to Date

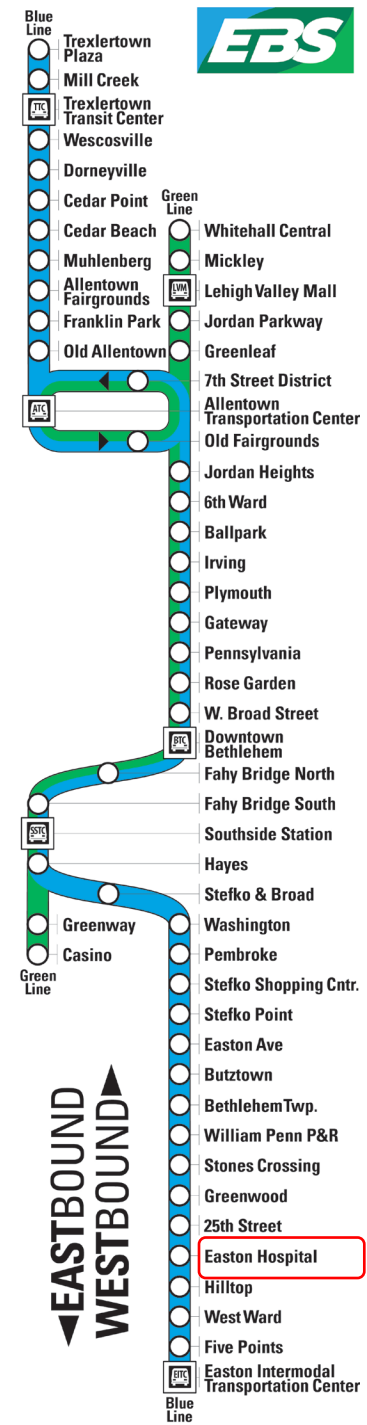
Station Name: **Easton Hospital**

EBS Line: **Blue**

Municipality: **Wilson**

ROW: **Municipal**

- Hospital Interested in converting Lehigh & 20th Street bi-directional to place station at Hospital Main Entrance.
- Wilson Boro has been unresponsive.
- Station Planning may result in stop changes.



EBS Progress to Date

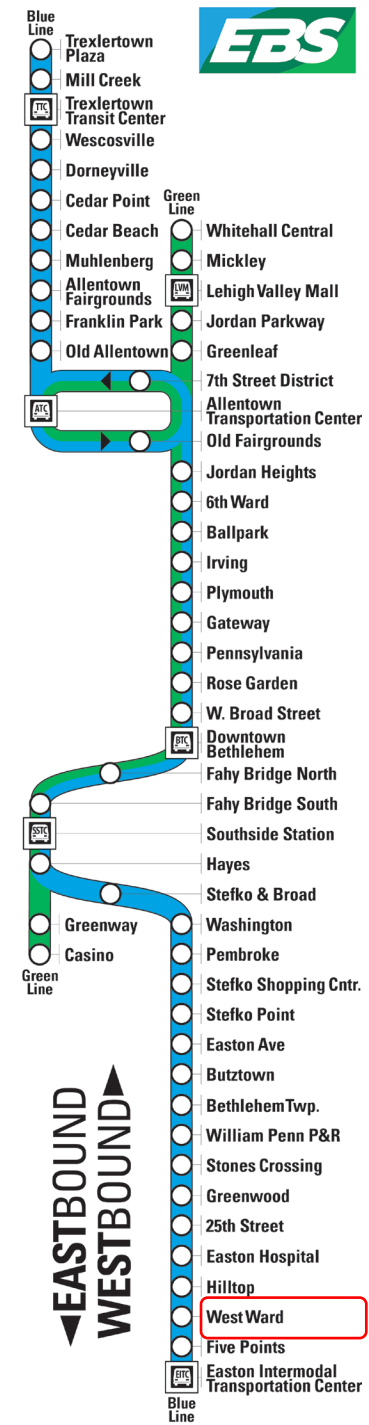
Station Name: **West Ward**

EBS Line: **Blue**

Municipality: **Easton**

ROW: **PennDOT**

- WB & EB Shelters recently installed.
- Connections to local circulator included in Blue Zones plan.
- EBS included in 2024 Easton Active Transportation Plan.



EBS Progress to Date

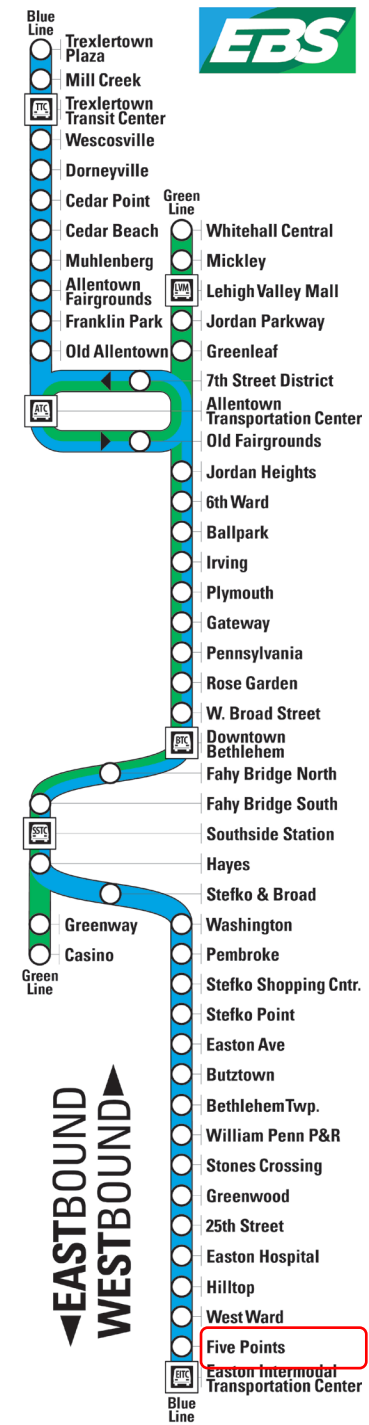
Station Name: **Five Points**

EBS Line: **Blue**

Municipality: **Easton**

ROW: **PennDOT**

- EBS included in 2024 Easton Active Transportation Plan.



EBS Progress to Date

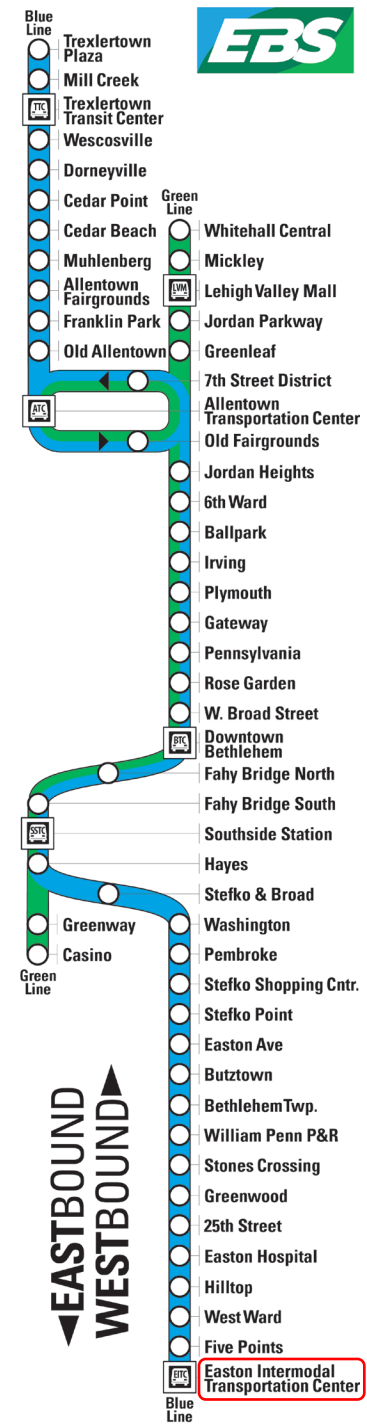
Station Name: EITC – Easton Intermodal Trans. Center

EBS Line: **Blue**

Municipality: **Easton**

ROW: **Municipal/LANTA**

- Major Multimodal Transportation Hub
- Realtime Signage and Shelter complete
- EBS included in 2024 Easton Active Transportation Plan.



EBS Progress to Date

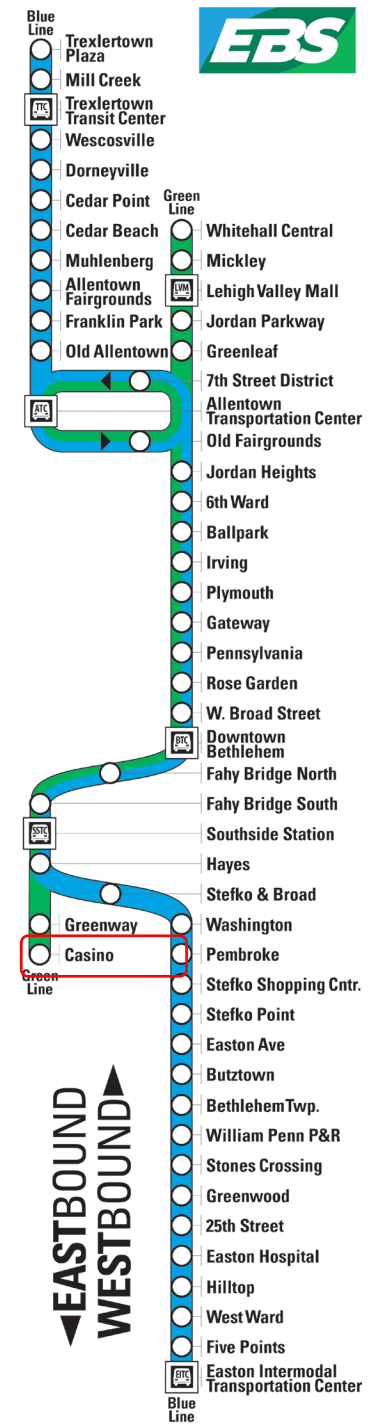
Station Name: **Casino**

EBS Line: **Green**

Municipality: **Bethlehem**

ROW: **Private**

- Private Site Access Agreements in place
- Dedicated Layover Pullout Built
- NOTE: Related Transit First project no longer relevant



EBS Progress to Date

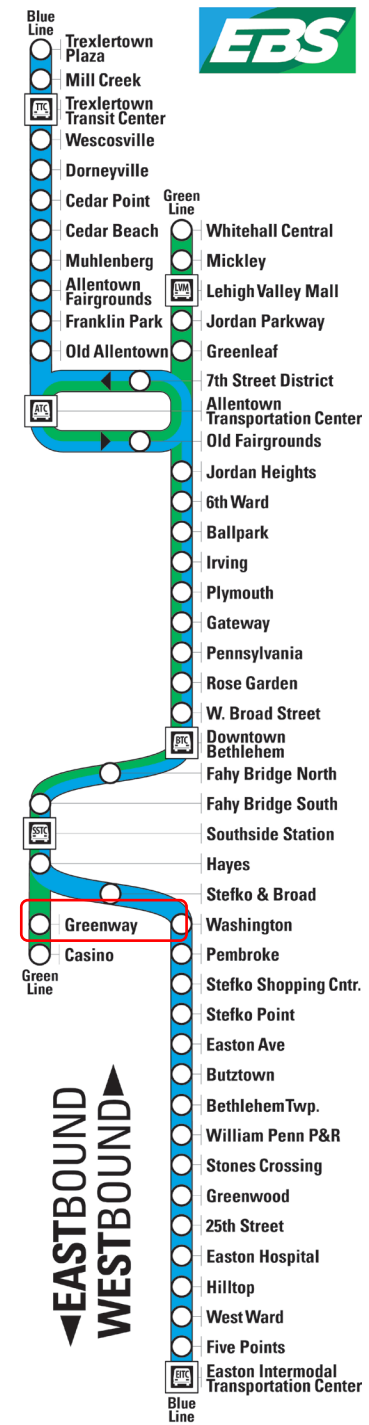
Station Name: **Greenway**

EBS Line: **Green**

Municipality: **Bethlehem**

ROW: **PennDOT**

- Connection to Bike Path
- Frequent Requests for Blue Line connection.
- Neighborhood Connection improvement needed.
- Minimally Used.



EBS Progress to Date

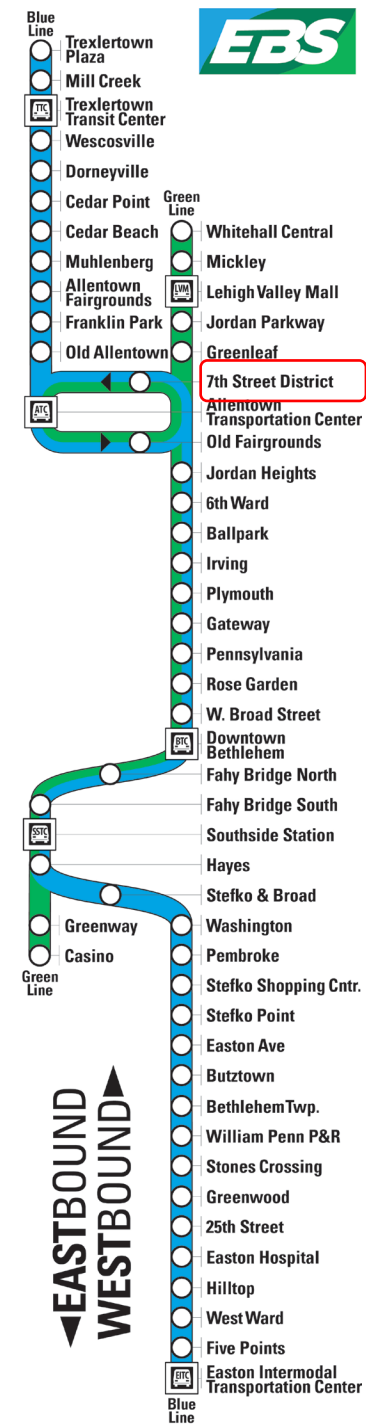
Station Name: **7th Street District**

EBS Line: **Green** and **Blue**

Municipality: **Allentown**

ROW: **PennDOT**

- Major Transfer Point
- Identified as “Mobility Hub” in Allentown Vision 2030.
- 2022 Transit First Study Project #6.
- Proposed EBS Upzoning in ZONE Allentown code update.
- Dedicated Left Turn Arrow from Tilghman identified in Transit First Study (Project 4)



EBS Progress to Date

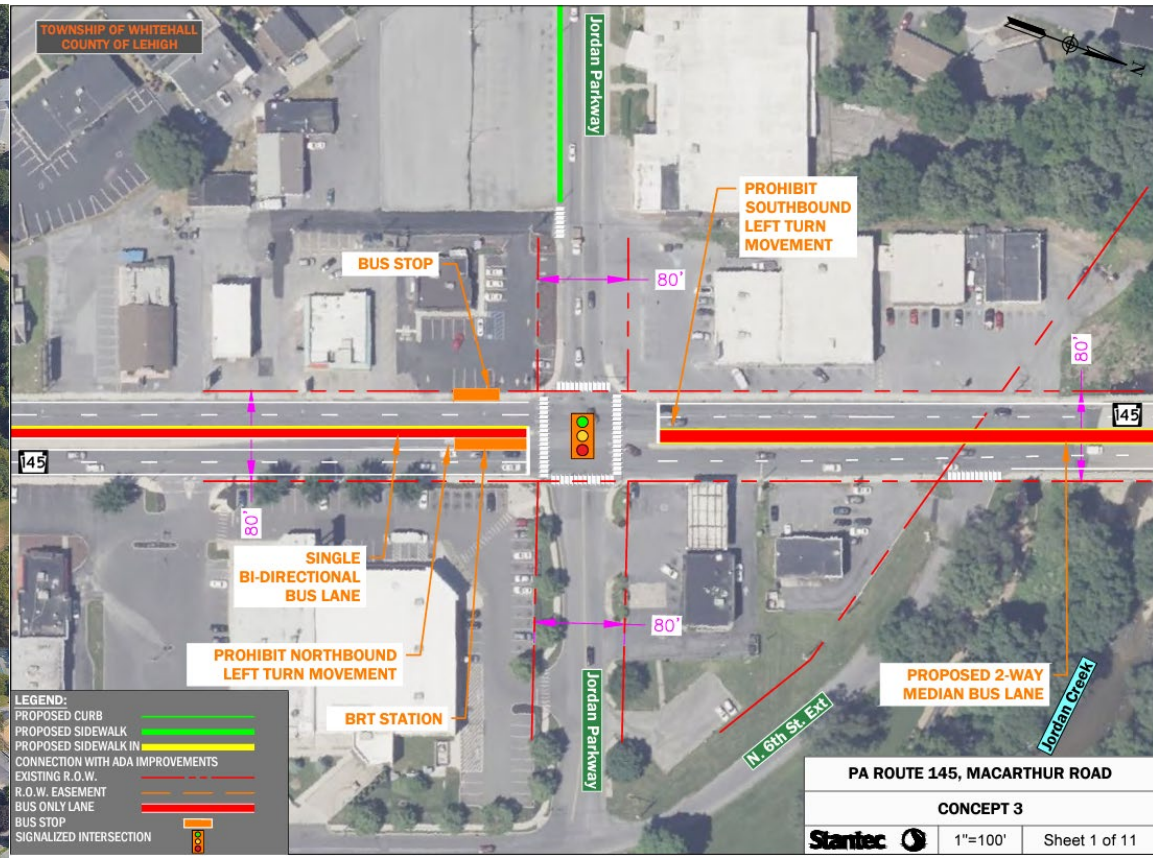
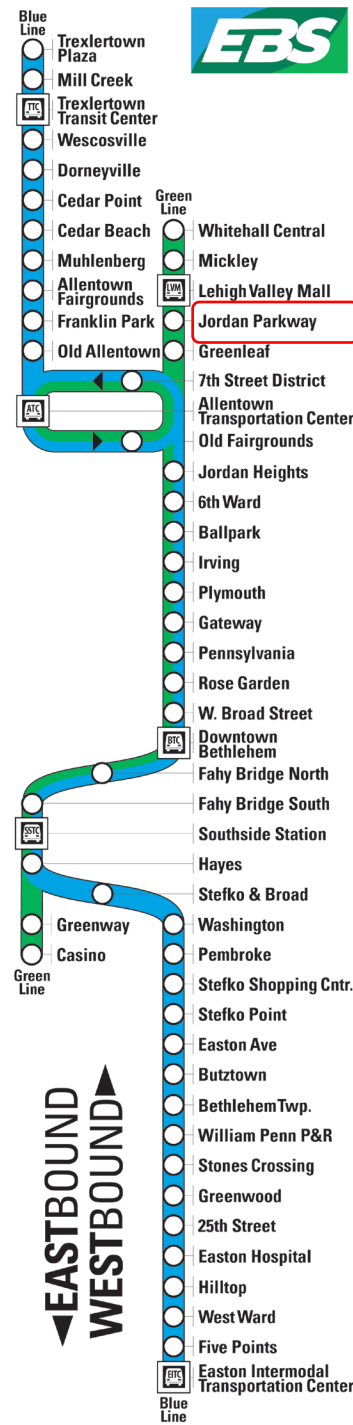
Station Name: **Jordan Parkway**

EBS Line: **Green**

Municipality: **Whitehall**

ROW: **PennDOT**

- Major Connection Point to local routes.
- Multimodal Bike Trial access
- Centerpiece of 2012 MacArthur Parkway Study
- Station Planning Completed in 2023 MacArthur Corridor Assessment



EBS Progress to Date

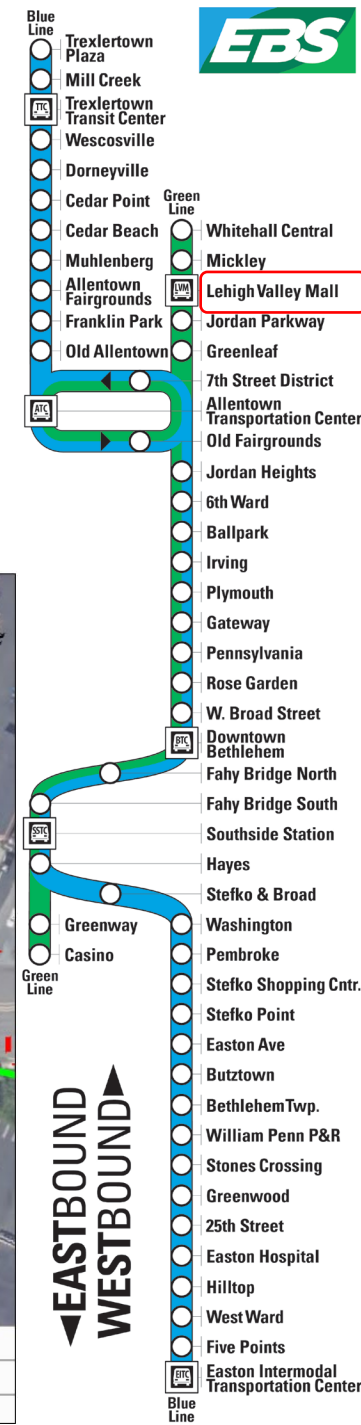
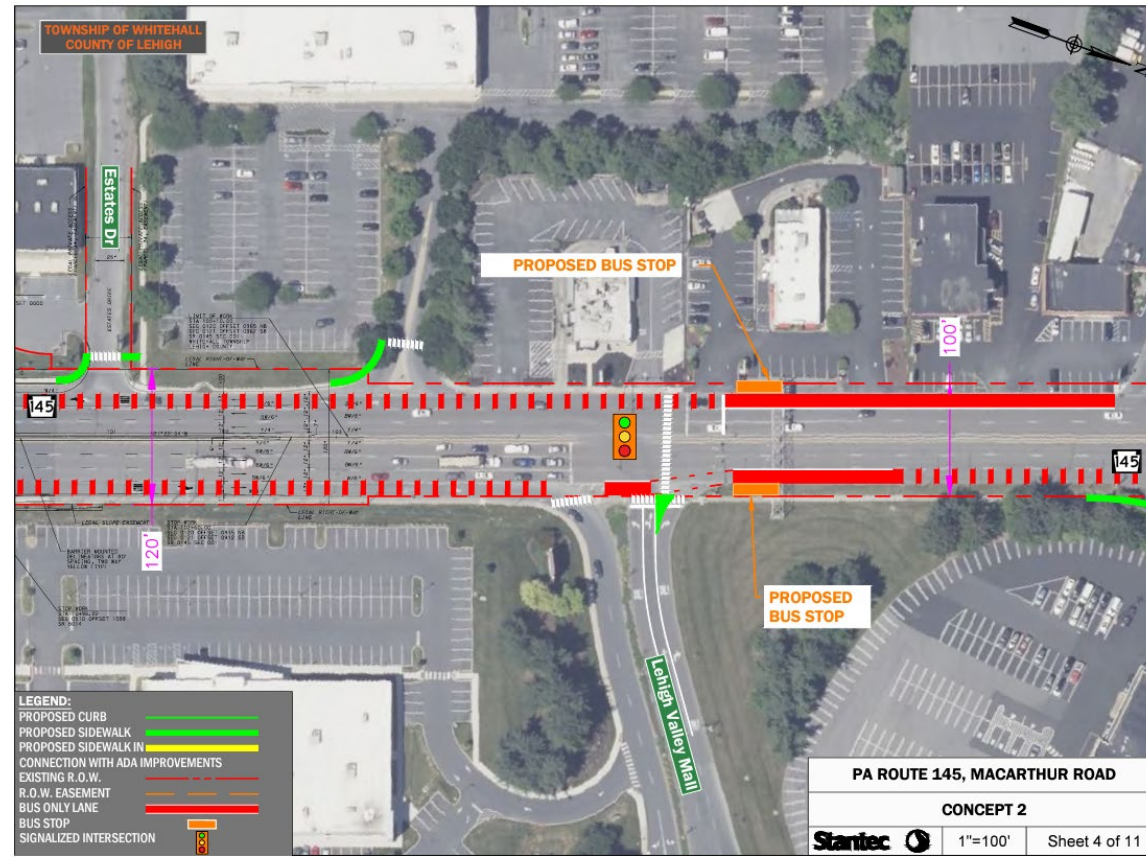
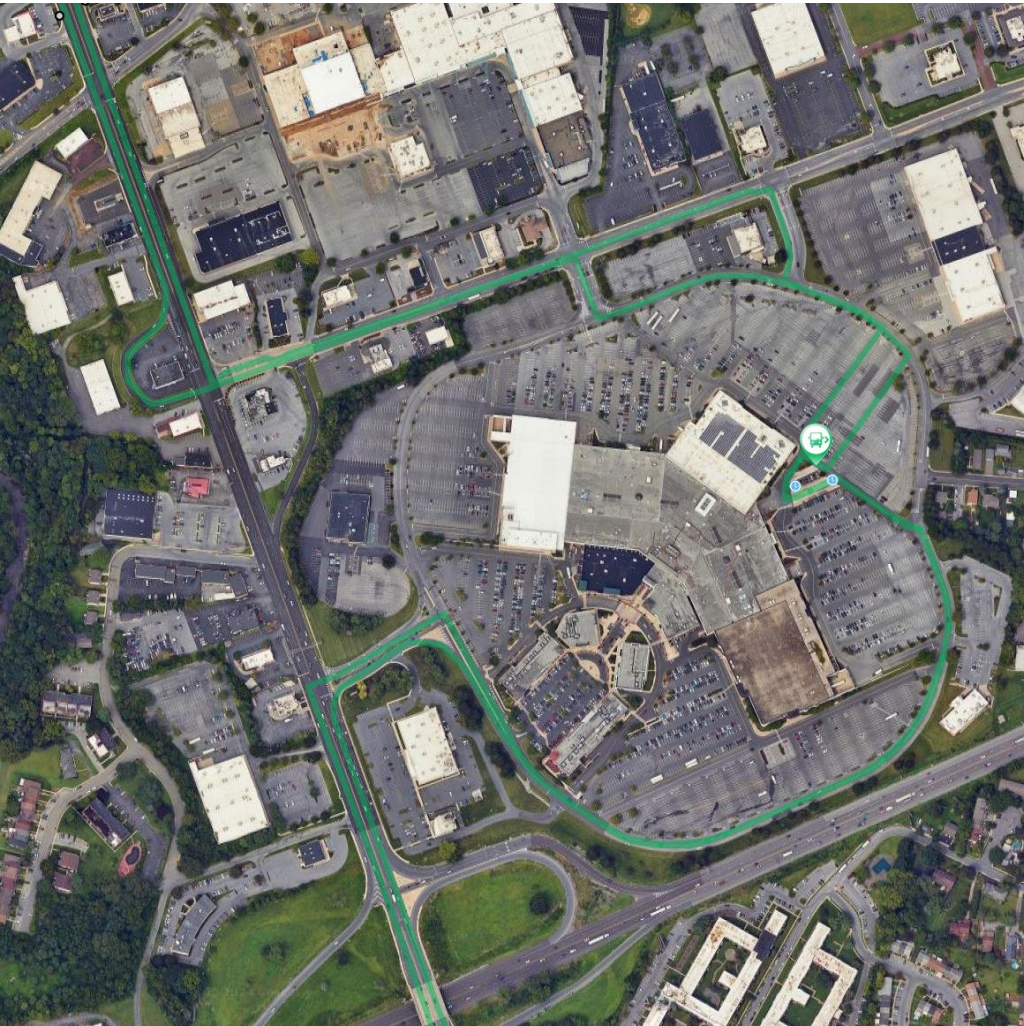
Station Name: **Lehigh Valley Mall**

EBS Line: **Green**

Municipality: **Whitehall**

ROW: **PennDOT**

- Current Transit Center will close in 2025
- Future EBS Station planned on MacArthur
- Station Planning Completed in 2023
- MacArthur Corridor Assessment
- Pedestrian Access Improvements needed



EBS Progress to Date

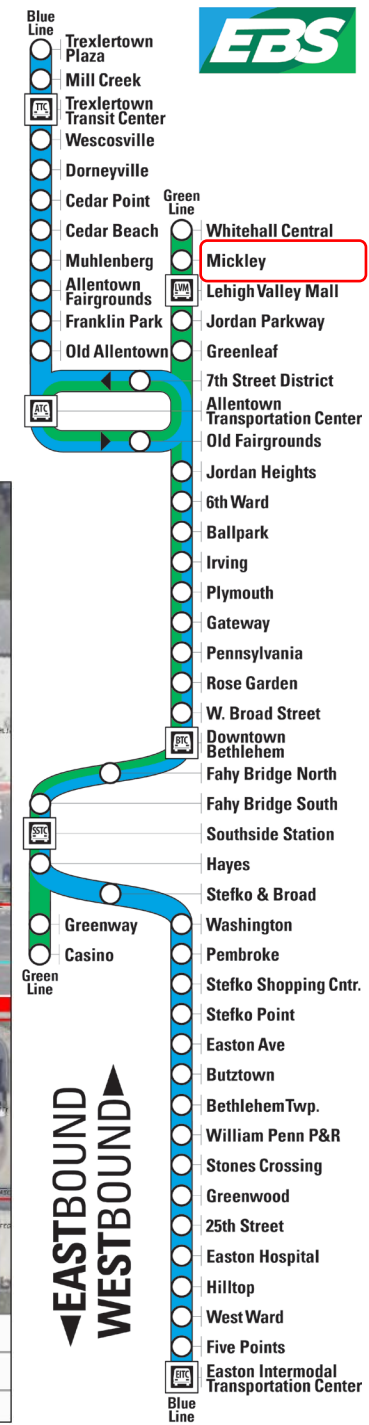
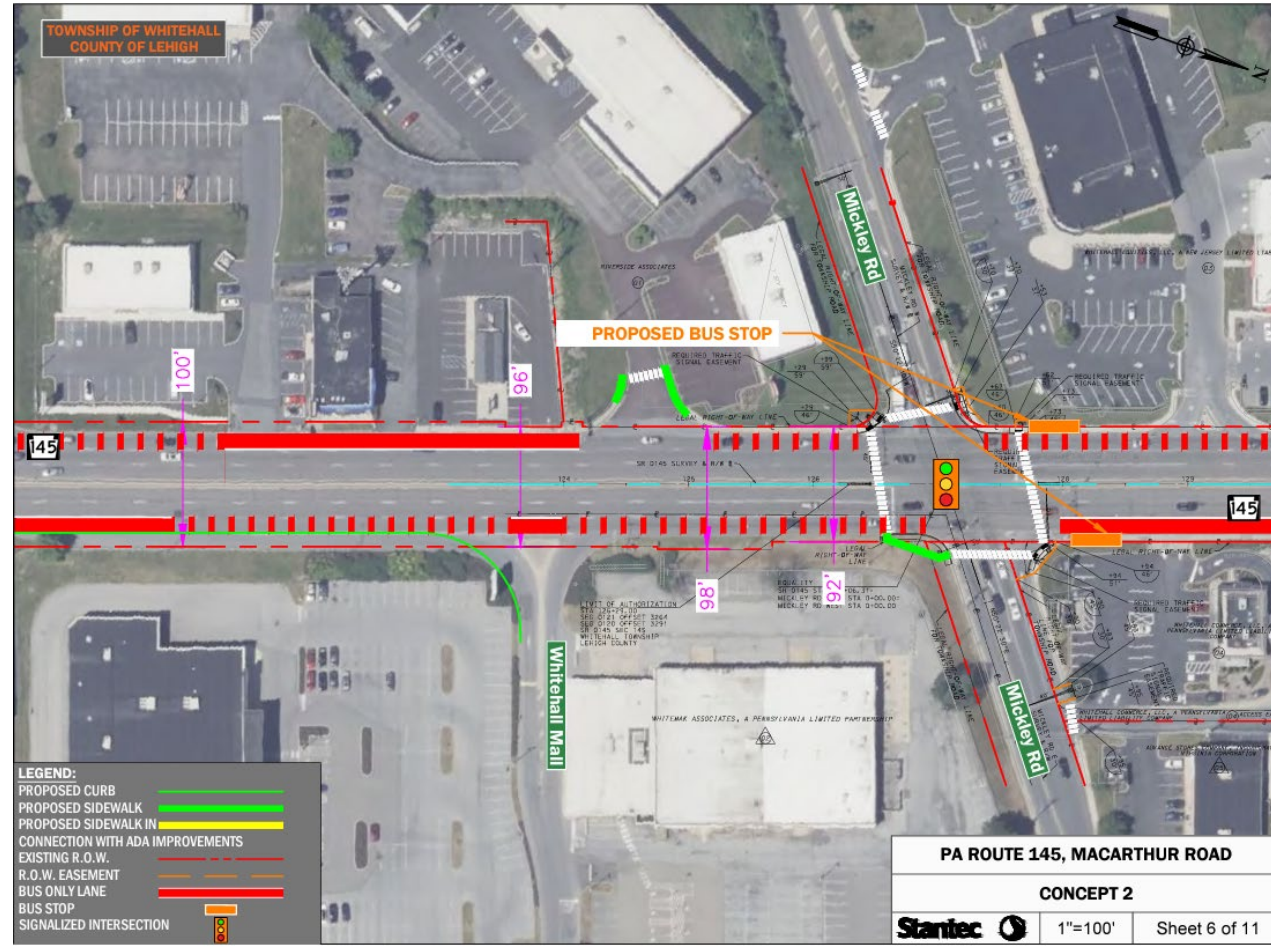
Station Name: **Mickley**

EBS Line: **Green**

Municipality: **Whitehall**

ROW: **PennDOT**

- Station Planning Completed in 2023
- MacArthur Corridor Assessment
- Pedestrian Access Improvements needed
- NB Shelter Pad being included in Taco Bell reconstruction.



EBS Progress to Date

Station Name: **Whitehall Central**

EBS Line: **Green**

Municipality: **Whitehall**

ROW: **Private or PennDOT**

- Current stop at on Walmart property
- Station Planning Completed in 2023
- MacArthur Corridor Assessment
 - Additional Assessment Needed
- Proposed stop in PennDOT ROW

