



ROUTE



Coplay/Airport/Mall Flex

EFFECTIVE 09/05/2016

With transfers to LANtaBus service at:

- LV Airport
- Airport Shopping Center
- LV Mall
- Whitehall Mall



For reservations and information

CALL **888-287-8818**
 CLICK www.lantabus.com

FOR RESERVATIONS CALL
 888-287-8818

LANta Flex is a reservation based, curb-to-curb, shared ride service provided by LANta.

Who is eligible?

LANta Flex is open to the public. Anyone can ride LANtaFlex service with a reservation.

Reservations must be made at least one day prior to the trip. To make a reservation, call **888-287-8818**

Eligible Trips

To be eligible, trips on the 504 Flex must either travel entirely within the Flex Zone, or between the Flex Zone and either the Lehigh Valley Mall or Whitehall Mall.

Hours of Operation

Route 504 -Coplay/Airport/Mall Flex is available:

Saturday
7:30 AM - 6:00 PM

LANTA services do not operate on Thanksgiving Day and Christmas Day.

Making a reservation

To make a reservation, call 888-287-8818. Please have the address of where you are traveling from and where you are traveling to (for major destinations you do not need the street address).

Reservations must be made at least one day prior to travel.

Riders should be ready for pick-up +/- 15 minutes around their scheduled time. When arriving +/- minutes around the scheduled time, drivers will wait 5 minutes for the rider to board the vehicle.

Cancelling a reservation

To cancel a reservation, call 888-287-8818 at least two hours prior to the scheduled pick up time.

Traveling to/from outside the Flex Zone

To travel to or from points outside the Flex Zone, transfers can be made to/from LANta Bus fixed route service at:

- LV Airport
- Airport Shopping Center
- LV Mall
- Whitehall Mall

Fares

Regular LANta bus fares apply on LANta Flex service. Day passes can be purchased on LANta Flex vehicles. Single ride cash fares can also be accepted. Other LANta fare products may be purchased on LANta Buses or at sales outlets listed below.

All tickets and passes may be purchased online at www.lantabus.com/fares/ or at the following locations:

Allentown:

Family Center (8th & Hamilton); Allentown Transportation Center (6th & Linden); LANTA Office (1060 Lehigh Street).

Bethlehem:

Bethlehem Transportation Center (Broad & Guetter);

Easton:

Easton Intermodal Transportation Center (123 S. 3rd St.); LANTA Office (3610 Nicholas Street).

No LANTA service on Thanksgiving Day and Christmas Day.

****No smoking, eating, or drinking on LANTA buses or vans.****

All trips are ADA accessible.

Vehicles

LANtaFlex service is operated using LANtaVan vehicles. LANtaVan vehicles are not equipped with bike racks. Child car seat requirements apply to LANtaVan vehicles.

Route 502 Slate Belt LANta Flex service is operated by Easton Coach Company

LANtaBus Fares	
	Effective 06/11/18
One-Way Ride Children 5 and under ride free with a fare-paying adult	\$2.00
Day Pass Unlimited rides all day	\$4.00
10-Ride Ticket	\$16.00
31-Day Pass Good for 31 days after first use	\$60.00
Annual Pass	\$660.00
Transfers Can be purchased when paying fare. Transfers are good for 2 hours from time of purchase and can only be used to complete a one-way trip	\$0.25

All above fare products may be purchased on LANTA buses or at LANtaBus sales outlets. Please see the listing on this page or visit lantabus.com or call 610-776-7433 for locations.

Day Passes and 31-Day Passes are non-transferrable.

Senior Citizens (65+) may ride LANta Bus FREE any time. The PennDOT Senior Citizen ID can be used as proof of eligibility.

Persons with disabilities may purchase a Day Pass for \$1 from the LANtaBus operator.

Please see lantabus.com or call 610-776-7433 for applications for Reduced Fare or Senior ID cards.



Follow Us On Twitter:
 @LANTALV



Like Us On Facebook:
 LANTALehighValley



Subscribe to our Youtube Channel:
 LANTALehighValley

Flex Zone Boundaries

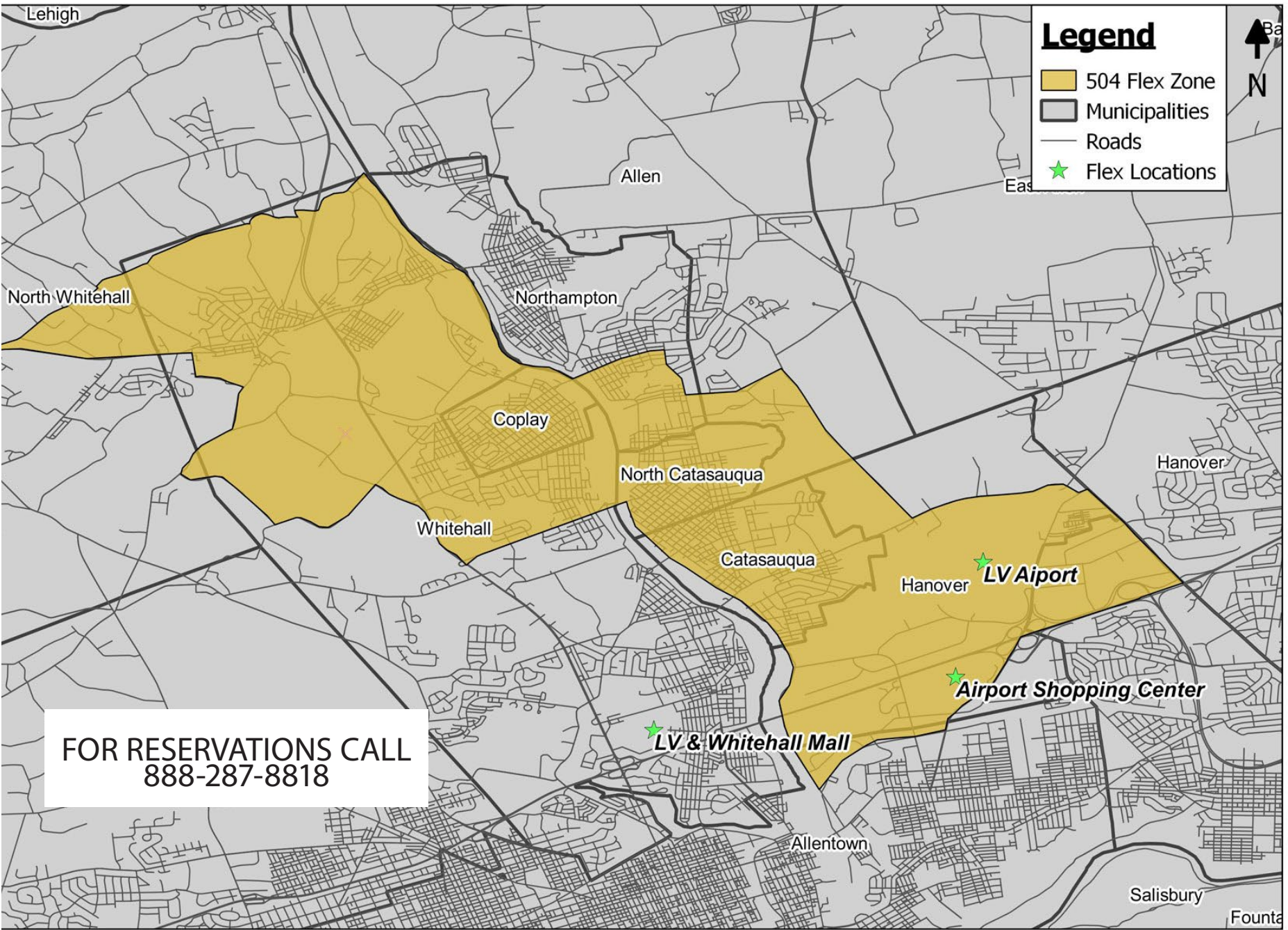
Northern (starting West and going East)– Spring St from Spring St & Old Post Rd to Spring St and the Lehigh River

Western (starting North and working south) – from Old Post Road & Spring St follow Old Post Road, R at Reliance St, R at Bridge St, R at Willow St, R at Bridge St, R at W Columbia St, R at Church St, L at Macarthur Road, L at Lehigh St and over the bridge, R at Front St, continues onto Lehigh St, continues onto Dauphin St, end at Dauphin and American Parkway

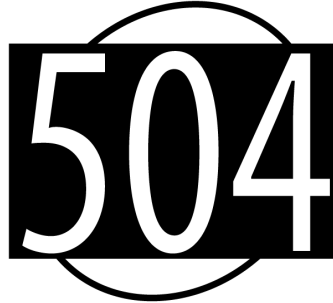
Southern (starting West and working East) – from American Parkway & Dauphin, follow American Parkway, L at Airport Road, R at cross over of Airport Rd and Rt. 22, end at crossover of Rt. 22 and Schoenersville Road

Eastern (starting North and working South) – from where Spring St lines up with the Lehigh River, follow the Lehigh River, L at Chestnut St and over the bridge (becomes 9th St), R at Howertown Rd, L at Bullshead Rd, R at Willowbrook Rd, R at Race St, take Airport to R onto Schoenersville Rd, end at crossover of Schoenersville Rd and Rt. 22.

Flex Route 504 - Coplay/Airport/Mall Flex



**FOR RESERVATIONS CALL
888-287-8818**



ROUTE

Coplay/Airport/Mall Flex

○-----**EFFECTIVE 09/05/2016**

With transfers to LANtaBus service at:

- LV Airport
- Airport Shopping Center
- LV Mall
- Whitehall Mall



For reservations and information

CALL **888-287-8818**
CLICK www.lantabus.com